



# Palm and Pine



A publication of the San Geronio Chapter of the Sierra Club  
Serving Riverside and San Bernardino Counties

Volume 46 Number 1

Protect America's Environment For our Families . . . For our Future

January-February 2016

## In This Issue

Contacts for Chapter Office and Groups;  
USPS Form 3526 .....2

Chapter Meeting on Jan 5<sup>th</sup> ; Calendar of  
Outings, Meetings, Events .....3-12

Group News Big Bear, Los Serranos, Mojave,  
Moreno Valley; Sierra Club's 2016 Calendars'  
Order Form .....6-7

Palm & Pine Advertising; Legacies of Letty  
French Live On .....9

Sierra Club Membership Application;  
Chapter's Feb 2<sup>nd</sup> Meeting .....12

## Membership Meetings

Tuesday, Jan 5<sup>th</sup> • 7:30 PM

"Pacific Trail Firsts"

Presented by Teddi Boston

(see write up on Page 3)

Tuesday, February 2<sup>nd</sup> • 7:30 PM

"100 Days on the  
Mighty Colorado River"

Presented by Bryan Brown

(see write up on Page 12)

Programs are held at the  
San Bernardino  
County Museum, 2024 Orange  
Tree Lane, Redlands  
(California St. exit off 10 Fwy)

## Sierra Club Shapes Riverside Open Space

By Kurt Gunther, Sierra Club Member

In 1979 Riverside residents, helped by hard-working Sierra Club volunteers collected thousands of signatures to qualify Prop. R for the city ballot and won the campaign decisively.

Finally a law was enacted reflecting overwhelming citizen support for protecting Riverside's unique natural assets. Scenic hills and arroyo watercourses, the citrus Greenbelt, historic Victoria Avenue, Sycamore Canyon, and the last undeveloped stretch of the Santa Ana River in La Sierra next to the Hidden Valley Wildlife Preserve are included.

The Riverside City Council, however, soon began undermining the law by granting unwarranted variances to developers.

So residents and Sierra Club members circulated petitions again to put Measure C on the 1987 ballot. It passed handily even though the City Council tried to confuse voters by putting a competing measure on the

ballot without gathering signatures. Measure C required that any changes to



Photos courtesy of Yelp.

both laws had to be approved by voters. It also expanded La Sierra's protections by requiring a specific plan be prepared to protect river open space, trail and the wildlife preserve.

In 1988 development interests brought a lawsuit to overturn R and C. The California Supreme Court rejected their case, upholding these two citizens' laws. In a 1989 election developers then tried to repeal the laws, but were soundly defeated by 80%. Once more the Sierra Club stood

with the residents of Riverside.

In 2005 the Sierra Club was the first organization to support a lawsuit, also joined by Audubon, Rural Residents, and Friends of the Hills, to stop City Hall from giving developers five times the number of houses allowed by R & C on the La Sierra River Ranch. The City even had the gall to consider shifting proposed homes that could not be built on nearby



land contaminated with toxic industrial wastes to the protected river area. With key Sierra Club support, citizens won in court. Thank you, Sierra Club.

In 2014 a Las Vegas developer tried to repeal R & C in La Sierra. His proposal allowed 1,950 houses where 152 are allowed by R and C. His committee spent a record \$1.5 million on the campaign. The developer used a loophole in California campaign finance law to conceal the identities of contributors. He formed a limited liability company or LLC in Nevada in January 2014. That

Continued on Page 9 >>>



## Political Update

By Jono Hildner, San Geronio Chapter Political Chair

WELCOME TO THE BEAUTIFUL POLITICAL YEAR OF 2016!!

This is the year that we can make a REAL difference for the environment here in the Inland Empire.

Our opportunities are so great that the National Club has invested in training a small cadre of volunteer members to learn how to mobilize our members and others in support of some real environmental champions who are running to replace incumbent knuckle-dragging climate change deniers and those who have been bought and paid for by the petroleum industry. This is a **BIG DEAL** and we need your help!

This year we are being encouraged by the national political team to make early endorsements of **FOUR** of our incumbent members of Congress who have had outstanding voting records. This has never happened before in this Chapter's history! We are turning the IE green! That's the bright side. On the other side, we have a total of seven members of our Congressional delegation – three of whom are fighting us tooth and nail. I don't see much hope to change the minds of Reps. Cook, Calvert or Royce, but we have great potential for increasing the clout of the environment in Sacramento.

**GET INVOLVED** by sending an email to Jono@Hildner.com or giving me a call at 760/861-5365. We need folks to do all sorts of things. It doesn't matter



about large corporate interests than the health of their constituents is a testament to how they recognize that those who care about the quality of the air that we breathe, won't pay any attention to how they vote and we won't get involved in electing leaders who care. **ARE THEY RIGHT??**

The fight for the reduction in petroleum use in SB 350 shows that having a Democrat in office, does not mean that we have an environmentalist in office. It is clear that we cannot rely on the support of Assembly members, Brown in AD47, Rodriguez in AD52 and Medina in AD61. As we start to get into high gear for the 2016 election, we need to find viable candidates who are environment friendly to replace them. The search is on and there are signs of possible success on the horizon.

Perhaps the better news is that we have three extremely viable, environmentally conscious Democrats challenging incumbents in three districts that have never been "green." Abigail Medina is running in AD40, Greg Rodriguez in AD42, and Sabrina Cervantes in AD60. While we are months away from making endorsements, it's possible that we could move our endorsement process to earlier in the year for a number of these races and make a real effort to get volunteers

Continued on Page 9 >>>

what your skills may be, we can find a place for you. Can you order pizza? Can you make a phone call? Can you collate a bunch of papers? Can you knock on doors or enter data into a computer? We need all of this. We even need those who can simply show up and give encouragement to others. Don't say, "Let George do it," as George may not show up.

The fact that we lost the battle at the Southern California Air Quality Management Board in December that would have, should send a clear message to all of us that we need to elect better representation at the local level. The idea that our local elected officials care more

# Contact Us . . .

San Gorgonio Chapter Website: <http://sangorgonio.sierraclub.org>

**San Gorgonio Chapter Excom**

**Chair**.....**Mary Ann Ruiz**  
.....909-815-9379  
.....ruizmaryann@gmail.com

**CCL Delegate**.....**Steve Farrell**  
.....661-449-2867  
.....mr\_sqf@yahoo.com

**Secretary** .....**Kim Floyd**  
.....760-680-9479

**Treasurer**.....**Ladd Seekins**  
.....909-825-4427  
.....ladd.g.seekins@gmail.com

**Conservation Chair**.....**Kim Floyd**  
.....760-680-9479  
.....kimfloyd@fastmail.fm

**Litigation Chair**.....**Joan Taylor**

**Membership Chair**.....**Mike Millspaugh**  
.....951-653-2068  
.....mmillspaugh@verizon.net

**Outings Chair**.....**Ralph Salisbury**  
.....951-686-4141  
.....ralphsalisbury@att.net

**Political Chair**.....**Jono Hildner**  
.....760-861-5365  
.....jono@hildner.com

**CNRCC Delegates**

George Hague .....909-924-0816  
Kim Floyd .....760-680-9479

**Wilderness Skills/Leadership Training:**  
.....ralphsalisbury@att.net

**Group Representatives To Excom**

**Big Bear Group:**  
.....Ed Caliendo 442-242-4103  
.....dogs111@msn.com

**Los Serranos Group:**  
.....Brian Elliott  
.....brianelli@aol.com

**Mojave Group:**  
.....Susan Stueber 760-900-5330  
.....susanquintin.stueber@gmail.com

**Moreno Valley:**  
.....George Hague 951-924-0816

**San Bernardino Mtns. Group:**  
.....Dave Barrie 909-337-0313  
.....barriemail@mac.com

**Tahquitz Group:**  
.....Jeff Morgan 760-324-8696

**Santa Margarita Group:**  
.....Pam Nelson 951-767-2324  
.....sierraclubsmg@gmail.com

**Chapter Conservation Issue Chairs**

**Desert Issues – High Desert**  
.....**Kim Floyd** 760-680-9479  
.....Kimffloyd@fastmail.fm

.....**Brian Baker** 760-242-6526  
.....bb1769@hotmail.com  
.....**Jenny Wilder** 760-345-4001  
.....jensoasis@aol.com

**Desert Issues – Low Desert**  
.....**Joan Taylor**  
.....palmcanyon@mac.com  
.....**Jeff Morgan** 760-324-8696  
.....jckmorgan@aol.com

**Desert – Eagle Mountain**  
.....**Jeff Morgan** 760-324-8696  
.....jckmorgan@aol.com

.....**George Hague** 951-924-0816  
**Forestry Issues – Mountaintop RD**  
.....East—**Ed Wallace** 909-584-9407

.....West—**Steve Farrell** 661-449-2867  
.....mr\_sqf@yahoo.com

**Forestry Issues – San Jacinto RD**  
.....**Joyce Burk** 760-252-3820

**Forestry Issues – Cleveland NF**  
.....**Pam Nelson** 951-767-2324  
.....sierraclubsmg@gmail.com

**Forestry Issues – Front Country RD**  
.....**Joyce Burk** 760-252-3820

.....**Mary Ann Ruiz** 909-815-9379  
.....ruizmaryann@gmail.com

**Water Issues**.....**Steve Farrell** 661-449-2867

**Group Directory**

**Big Bear Group:**  
**Chair – Ed Caliendo** 442-242-4103  
dogs111@msn.com  
Meets 3rd Thursday, Discovery Center  
North Shore, 6:30 p.m.  
www.sierraclubbigbeargroup.org

**Los Serranos Group:**  
**Chair – Brian Elliot** brianelli@aol.com  
Meets 3rd Tuesday Upland Presbyterian  
Church, Ed Building 7 p.m.

**Mojave Group:**  
**Chair – Susan Stueber** 760-900-5330  
susanquintin.stueber@gmail.com  
Meets 2nd Wednesday except Jul. & Aug.  
Sterling Inn, Regency Room,  
17738 Francesca, Victorville 7 p.m.  
(just north of Bear Valley and Ridgecrest)  
(also contact earthingwiley2000@yahoo.com)

**Moreno Valley Group:**  
**Chair – Michael Millspaugh** 951-653-2068

**Mountains Group:**  
**Chair – Dave Barrie** 909-337-0313  
barriemail@mac.com  
Meets 2nd Monday 7:00 p.m.  
Except Aug. & Dec. St Richard's  
Episcopal Church, 28708 Hwy 18, Sky Forest

**Santa Margarita Group:**  
**Chair – Pam Nelson** 951-767-2324  
sierraclubsmg@gmail.com  
Meets 2<sup>nd</sup> Thur., 6:00 p.m. except July &  
August at Temecula Valley Library,  
30600 Pauba Road, Temecula

**Tahquitz Group:**  
**Chair – Jeff Morgan** 760-324-8696

## Palm and Pine

USPS 341-430  
ISSN 1090-9974  
A bi-monthly newspaper serving  
Riverside and San Bernardino counties.

Published by the  
**Sierra Club**  
San Gorgonio Chapter  
4079 Mission Inn Avenue, Riverside, CA 92501-3204  
(951) 684-6203  
<http://sangorgonio.sierraclub.org>

The *Palm and Pine* is published six times per year January/February, March/April/ May/ June, July/August/ September/October and November/ December. Submit all articles to the Editor by the 5th of the Month prior to issue. Preferred format is electronic mail. The Editor reserves the right to edit all work for reasons of space, clarity or libel. If you wish to have your photos or disks returned, please include a stamped, self-addressed envelope. Outings must be submitted to the appropriate Outings Chair.

**Editor**

Jo Ann Fischer  
PO Box 3164, Running Springs, CA 92382  
(909) 939-0332  
e-mail: mywwuni@charter.net

**Outings Calendar Submissions**

Ralph Salisbury  
2995 Floral Ave, Riverside, CA 92507  
(951) 686-4141  
e-mail: ralphsalisbury@att.net

**Webmaster**

Steve Farrell  
e-mail: mr\_sqf@yahoo.com  
<http://sangorgonio.sierraclub.org>

**Meetings Calendar Submissions**

Ladd Seekins  
22418 De Soto St, Grand Terrace, CA 92313-5474  
(909) 888-0161  
(909) 825-4427 Weekends & evenings  
e-mail: ladd.g.seekins@gmail.com

**Non-Member Subscriptions (\$12.00)**

Sierra Club, San Gorgonio Chapter  
4079 Mission Inn Ave, Riverside, CA 92501-3204  
(Sierra Club members not members of the San Gorgonio Chapter:  
Supply Club membership number.)  
**Member Change of Address**  
Sierra Club, Change of Address  
PO Box 421041, Palm Coast, FL 32142-1041  
(Be sure to supply Membership number)

The *Palm and Pine* is published bimonthly.  
Periodicals postage paid at Riverside, CA

**Membership Information**

There is a membership coupon in this issue and address change information above. For other questions, contact the Sierra Club at (415) 977-5663 or ralphsalisbury@att.net

**POSTMASTER:**

Send address changes to:  
Palm and Pine

Sierra Club San Gorgonio Chapter, PO Box 421041, Palm Coast, FL 32142-1041

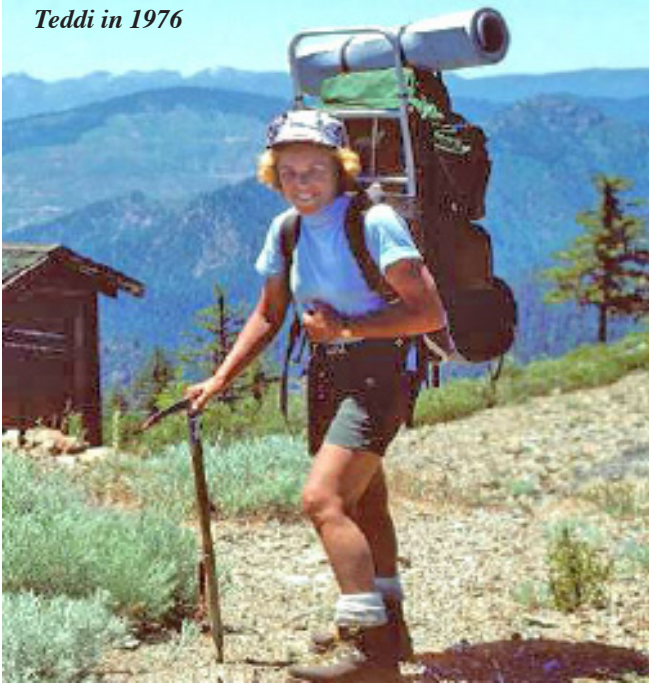
### Calculations for USPS Form 3526

October 20, 2015	Average	Sep/Oct 2015	Jul/Aug 2015	May/June 2015	Mar/Apr 2015	Jan/Feb 2015	Nov/Dec 2014
a. Total Number of Copies	5667	6000	5500	6000	5500	5500	5500
b. Paid and/or Requested Circulation							
(1) Paid/Requested Outside County	2519	2542	2494	2443	2460	2417	2755
(2) Paid In-County Subscriptions	2668	2777	2750	2734	2805	2658	2282
(3) Sales Through Dealers	0	0	0	0	0	0	0
(4) Other Classes Mailed	0	0	0	0	0	0	0
c. Total Paid and/or Requested Circulation	5186	5319	5244	5177	5265	5075	5037
d. Free Distribution by Mail							
(1) Outside County	6	6	6	6	6	6	6
(2) In-County	3	3	3	3	3	3	3
(3) Other Classes Mailed Through USPS	0	0	0	0	0	0	0
e. Free Distribution Outside the Mail	200	250	150	300	200	150	150
f. Total Free Distribution	209	259	159	309	209	159	159
g. Total Distribution	5395	5578	5403	5486	5474	5234	5196
h. Copies not Distributed	272	422	97	514	26	266	304
i. Total	5667	6000	5500	6000	5500	5500	5500
j. Percent Paid and/or Requested Circulation	92%	89%	95%	86%	96%	92%	92%

## January's Chapter Program Highlights Pacific Crest Trail Firsts

Our Speaker at the January 5<sup>th</sup> chapter meeting is Teddi Boston, Volunteer Coordinator for the San Gorgonio Wilderness Association and resident of Landers. In 1976 at the age of 49, Teddi was the first female thru hiker to complete the Pacific Crest Trail (PCT). Furthermore,

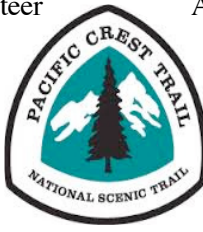
*Teddi in 1976*



she completed the PCT north to south, starting at the Canadian border and ending at the Mexican border. She says she did it the reverse to the usual direction because she was told it was impossible.

Last year "just to prove I could do it" Teddi hiked a 325-mile section of the PCT in Southern California. Teddi's presentation will include her photographs from the PCT hikes. The meeting starts at 7:30 pm at the

San Bernardino County Museum, 2024 Orange Tree Lane, Redlands.



An article on the Pacific Crest Trail Association web site tells her fascinating story, "In the 1960s, with two daughters in Girl Scouts, Boston ventured on her first backpack into California's San Bernardino Mountains. 'It rained like crazy,' she said. 'Oh god, I fell in love with it.'

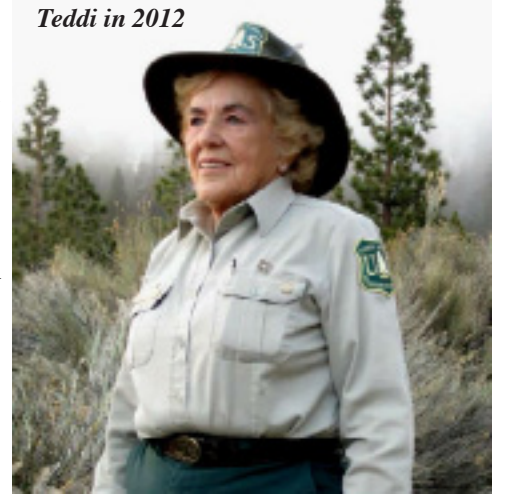
"Soon she was taking eight girls on a full John Muir Trail hike. And it was there, in 1972, that Boston met her first PCT thru-hiker. That's all it took. She came home, bought (Eric) Ryback's PCT book and started to

plan her own thru-hike. She made a detailed, day-by-day 11-page itinerary with 16 mail drops. She took a built-up load of sick leave and requested six months off.

"On May Day 1976, toting a 65-pound pack, Boston couldn't have been further removed from twirling ribbons around a sunny May Pole. A blizzard in Washington drove her into her tent for two days. Her local paper, the *Orange County Register*, recorded her routine for the early weeks: 'Up at 3:30 a.m. daily, she walked on the frozen crust until about 10 a.m., when the sun, melting the snow, forced her

to don her snowshoes. Since all trail markers were buried by the snow, she did the first month by compass and map. When she got far enough south to find her first trail marker she was fewer than 10 feet off the trail.'"

*Teddi in 2012*



## Calendar of Outings, Meetings, and Other Events

JANUARY-FEBRUARY 2016

The outings calendar is on the Internet at <http://sangorgonio.sierraclub.org>

### CALENDAR SUBMISSIONS

**DEADLINE:** Items for the March/April 2016 Calendar are due by February 1, 2016.

**FORMAT** items similar to those below. Send items electronically if possible.

**OUTINGS:** Send outings write-ups to your group or section Outings Chair.

**MEETINGS** & other events: Send electronically to Ladd Seekins at <ladd.g.seekins@gmail.com>

### GENERAL INFORMATION, RULES & DISCLAIMERS

All Outings Leaders are Chapter Certified Leaders having appropriate Outings Training Courses, First Aid Courses, & experience for the Outings they lead. **LEADERS** may exclude individuals from participation if they believe they may not be qualified. Non-Sierra Club members may join outings unless otherwise stated in the write-up. All participants agree to abide by the Leader's rules. Participants should **CALL THE LEADER AHEAD TO SIGN-UP.**

### WHAT TO BRING

Many Outings specify items to be carried by **EACH** participant. Do not attend Outings without the specified items unless you have first discussed it with the leader. Often the **TEN ESSENTIALS** are required. They are: 1) map, 2) compass, 3) flashlight, 4) knife, 5) windproof/waterproof matches in waterproof case, 6) fire starter, 7) first aid kit, 8) extra food & water for emergency use only, 9) extra clothing including rainwear, & 10) sun protection including sunscreen/sunglasses/hat.

### ADVENTURE PASS SPECIAL NOTICE

Most outings occurring in the San Bernardino, Angeles, Cleveland, or Los Padres National Forests require a Forest Service permit for each vehicle (Adventure Pass). They are indicated by \*\* in the calendar. Be sure to contact the leader regarding permits. The permits cost \$30 per year or \$5 per day; however they may not be obtainable the day of your Outing. If you arrive at the meeting place without making arrangements with the leader & you don't have a permit or find a ride in a vehicle with a permit, you will not be able to attend the outing. You are expected to share the cost of the daily permits equally among everyone in the vehicle or a suggested \$.50 contribution from everyone for annual permits (above normal mileage contribution). America the Beautiful Interagency Passes may be used in lieu of Adventure Pass.

### CARPOOLING POLICY

In the interests of facilitating the logistics of some outings, it is customary that participants make carpooling arrangements. The Sierra Club does not have insurance for carpooling arrangements & assumes no liability for them. Carpooling, ride sharing, or anything similar is strictly a private arrangement among the participants. Participants assume the risks associated with this travel. Drivers should have adequate insurance coverage & their vehicles should have no safety defects. Drivers of carpools agree to not consume any alcoholic beverages. It is customary for riders to share expenses with the driver. Five cents per mile per person for short trips is suggested while three cents per mile per person over 100 miles is usually reasonable.

### LIABILITY WAIVER

In order to participate on one of the Sierra Club's outings, you will need to sign the following liability waiver

Sign-In Sheet & Acknowledgment of Outing Member Responsibility, Express Assumption of Risk, & Release of Liability

I understand that during my participation in this Sierra Club Outing, I may be exposed to a variety of hazards & risks, foreseen or unforeseen, which are inherent in each Outing & cannot be eliminated without destroying the unique character of the Outing. These inherent risks include, but are not limited to, the dangers of serious personal injury, property damage, & death ("Injuries & Damages") from exposure to the hazards of travel & the Sierra Club has not tried to contradict or minimize my understanding of these risks. I know that Injuries & Damages can occur by natural causes or activities of other persons, animals, trip members, trip leaders & assistants or third parties, either as a result of negligence or because of other reasons. I understand that risks of such Injuries & Damages are involved in adventure travel such as Sierra Club Outings & I appreciate that I may have to exercise extra care for my own person & for others around me in the face of such hazards. I further understand that on this Outing there may not be rescue or medical facilities or expertise necessary to deal with the Injuries & Damages to which I may be exposed.

In consideration for my acceptance as a participant on this Outing, & the services & amenities to be provided by the Sierra Club in connection with the Outing, I confirm my understanding that:

**I have read any rules & conditions applicable to the Outing made available to me; I will pay any costs & fees for the Outing; & I acknowledge my participation is at the discretion of the leader.**

**The Outing begins & ends at the location where the Outing officially commences with leader & participants in attendance, as designated by the Sierra Club ("Trailhead"). The Outing does not include carpooling, transportation, or transit to & from the Trailhead, & I am personally responsible for all risks associated with this travel. This does not apply to transportation provided by the Sierra Club after the commencement & before the end of the Outing.**

**If I decide to leave early & not to complete the Outing as planned, I assume all risks inherent in my decision to leave & waive all liability against the Sierra Club arising from that decision. Likewise, if the leader has concluded the Outing, & I decide to go forward without the leader, I assume all risks inherent in my decision to go forward & waive all liability against the Sierra Club arising from that decision.**

**This Agreement is intended to be as broad & inclusive as is permitted by law. If any provision or any part of any provision of this Agreement is held to be invalid or legally unenforceable for any reason, the remainder of this Agreement shall not be affected thereby & shall remain valid & fully enforceable.**

**To the fullest extent allowed by law, I agree to WAIVE, DISCHARGE CLAIMS, & RELEASE FROM LIABILITY, & to INDEMNIFY & HOLD HARMLESS the Sierra Club, its officers, directors, employees,**

Calendar . . . Continued from Page 3

agents, & leaders from any & all liability on account of, or in any way resulting from Injuries & Damages, even if caused by negligence of the Sierra Club its officers, directors, employees, agents, & leaders, in any way connected with this Outing. I understand & intend that this assumption of risk & release is binding upon my heirs, executors, administrators & assigns, & includes any minors accompanying me on the Outing.

I have read this document in its entirety & I freely & voluntarily assume all risks of such Injuries & Damages & notwithstanding such risks, I agree to participate in the Outing.

Note: If the participant is a minor, the minor's guardian must sign on the minor's behalf.

### RECURRING MONTHLY MEETINGS (LOOK IN CALENDAR FOR DATES)

**(1ST MON) 6:00 PM SB MOUNTAINS GROUPEXCOM MEETING**  
Alpine Conference Room 27236 Blue Jay Mall on Feb 1, Apr 4, May 2, Oct 3, Nov 7. INFO: DAVE BARRIE, (909) 337-0313.

SB MOUNTAINS GROUP

**(1ST TUE) 7:30 PM SAN GORGONIO CHAPTER MEETING**  
PROGRAM: See front-page notice. PLACE: San Bernardino County Museum, 2024 Orange Tree Lane, Redlands. DIRECTIONS: Exit I-10 at California St. INFO: LADD SEEKINS ladd.g.seekins@gmail.com. (909) 800-3911

CHAPTER

**(1ST WED) 6:30 PM BIG BEAR GROUPEXCOM MEETING**  
The meeting place rotates. CONTACT: ED CALIENDO, (442) 242-4103, dogs111@msn.com.

BIG BEAR GROUP

**(1ST THU) LOS SERRANOS GROUPEXCOM MEETING**  
Odd-numbered months only (Jan, Mar, May, Jul, Sep, & Nov). PLACE: For meeting time & place, contact BRIAN ELLIOTT, brianelli@aol.com

LOS SERRANOS GROUP

**(2ND MON) 7:00 PMSB MOUNTAINS GROUP MEETING**  
Monthly program meeting. No meeting in August or December. PLACE: St. Richard's Episcopal Church, 28708 Highway 18, Sky Forest. INFO: DAVE BARRIE, (909) 337-0313.

SB MOUNTAINS GROUP

**(2ND TUE) 7:00 PM CHAPTER CONSERVATION COMMITTEE MEETING**

Monthly meeting or conference call. Take part in working on important conservation issues. Please participate: we need your help! INFO: KIM FLOYD, Conservation Chair, kimffloyd@fastmail.fm (760) 249-5385.

CHAPTER

**(2ND WED) 7:00 PM MOJAVE GROUP MEETING**  
Monthly meeting except for July & August. PLACE: Sterling Inn, Regency Room, 17738 Francesca, Victorville. (One block north of Bear Valley Rd. on Ridgecrest.) Enter on Ridgecrest side of the building. INFO: SUSAN STUEBER, susanquintin.stueber@gmail.com

MOJAVE GROUP

**(2ND THU) 6:00 PM SANTA MARGARITA GROUP MEETING**  
Monthly meeting except July & August. The public is welcome. PLACE: Temecula Valley Library, 30600 Pauba Road, Temecula. INFO: PAM NELSON (951) 767-2324 sierraclubsmg@gmail.com

SANTA MARGARITA GROUP

**(3RD TUE) 7:00 PM LOS SERRANOS GROUP MEETING**  
Monthly except July & August. Programs on nature, conservation & travel topics. The public is welcome & refreshments are served. See Los Serranos webpage for detailed program information: sangorgonio.sierraclub.org/groups/los\_serranos PLACE: First Presbyterian Church, 869 N. Euclid Ave, Upland CA (educational building, entrance in rear). INFO: BRIAN ELLIOTT, brianelli@aol.com.

LOS SERRANOS GROUP

**(3RD THU) 6:30 PM BIG BEAR GROUP MEETING**  
Monthly meeting except December. INFO: For current program information, please visit the Group web site www.sierraclubbigbeargroup.org. PLACE: Big Bear Discovery Center, 40971 North Shore Dr. (Hwy. 38), Fawnskin. INFO: ED CALIENDO, (442) 242-4103, dogs111@msn.com.

BIG BEAR GROUP

**(4TH TUE) 7:00 PM SAN GORGONIO CHAPTER EXCOM MEETING**

Chapter governance meeting. Monthly except for December. PLACE: The San Gorgonio Chapter office, 4079 Mission Inn Ave., Riverside. INFO: MARY ANN RUIZ, ruizmaryann@gmail.com, (909) 815-9379

CHAPTER

### WEEKLY RECURRING OUTINGS & FITNESS ACTIVITIES

Please read "LIABILITY WAIVER" preceding these listings

**MON 6:00 PM RIVERSIDE MT. RUBIDOUX ONE HOUR FITNESS WALK**

MEET: Ninth Street entrance to Mt. Rubidoux. INFO: JUDY SMITH, (951) 369-5117. CHAPTER

**WED 7:00 PM MOJAVE GROUP CONDITIONING WALK WALK**

Please join us for a three-mile conditioning walk beside the Mojave River in Apple Valley. We leave promptly at 7 PM. MEET: In the Jess Ranch Marketplace parking lot closest to the Mojave River Bed, between the Jess Ranch Cinemark & Bed, Bath & Beyond Store, address: 18815 Bear Valley Rd, Apple Valley, CA 92308. Light post location is 158. Walks are paced for participants. Come enjoy the evening air, river breeze, sunsets, stars & moon on this 3 mile Mojave River walk. BRING: Flashlight & water. WEAR: layered clothing & good hiking shoes. LEADERS: BILL SPRENG bspreng@gte.net (760) 951-4520 & JENNY WILDER (760) 220-0730 jensoasis@aol.com. MOJAVE GROUP

### DECEMBER 28 – JANUARY 3

Please read "LIABILITY WAIVER" preceding these listings

(Also refer to Weekly reoccurring Outings & Activities)

**JAN 1 (FRI) 9:00 AM BONITA VISTA NEW YEARS DAY HIKE**

Come and start the New Year right. The Bonita Vista First Day Hikes offer individuals and families an opportunity to rejuvenate and connect with the outdoors by taking a hike on the first day of each month. We will explore the unique natural and cultural treasures in this beautiful area. RATING: Moderate with an uphill at the beginning and downhill at the end. This hike will be approximately 4 miles long. BRING: Water, a snack/lunch, and wear sturdy shoes/boots. MEET: Victor Valley Museum, Apple Valley Rd., Apple Valley at 8:30 AM. LEADER: Susan Stueber 760-900-5330, susanquintin.stueber@gmail.com or CO-LEADER: Jenny Wilder jensoasis@aol.com

MOJAVE GROUP

**JAN 3 (SUN) 8:00 AM PINE KNOT TRAIL HIKE**

One of the most popular trails in Big Bear in spring, summer and fall, Pine Knot trail is under-appreciated as a winter hike. Stands of black oak without leaves will allow for low angle sunlight to play brilliant reflections off the snow cover. With El Nino more likely than not to make something of a dramatic appearance this winter, the trail may be something of a challenge. RATING: Normally moderate, but could be strenuous due to snow, slush and ice. MEET: Sunday January 3<sup>rd</sup>, Aspen Glenn parking lot. Coming from the west on 18, take a right on Tulip Lane soon after Boulder Bay. Find the parking lot in under a mile on right. Coming from the east on 18, take a left on Mill Creek road across the street from Bear Valley Bikes. Find the parking lot on your left in less than a mile. BRING: The ten essentials including 2 liters of water, layered clothing, a warm winter coat. Snack/lunch, a good pair of hiking boots that are water proof, trekking poles, cramp-ons for the boots, sunglasses, sunblock, hat, gloves/mittens and scarf. Fresh snow/rain cancels. I will send out a confirmation or cancellation email the day before. RESERVATIONS: Email hike leader Peter Michelsen a petermichelsenor@gmail.com, or call me at 760-333-3103

BIG BEAR GROUP

### JANUARY 4 – JANUARY 10

Please read "LIABILITY WAIVER" preceding these listings

(Also refer to Weekly reoccurring Outings & Activities)

**JAN 5 (TUE) 8:00 AM FRANKISH PEAK HIKE**

This will be a strenuous 9 mile through hike on a steep use trail up the south slope to the top of Frankish Peak (elevation 4198 ft), with 2200 ft. elevation gain. We will hike down the north slope of Frankish Peak into a hidden valley, then gently up to the Barrett/Stoddard saddle, then down Barrett Canyon to Mt. Baldy Road. Great panoramic views in all directions from the peak. Rain cancels. BRING: sturdy boots, water, snack, sunscreen, trekking poles, and layer clothing appropriate for the weather. Contact John St. Clair to confirm and for directions to trailhead. LEADER: John St. Clair at 909-983-8501 or john@stclairs.us.LOSSERRANOS GROUP

**JAN 5 (TUE) 7:30 PM SAN GORGONIO CHAPTER MEETING**

PROGRAM: See front-page notice. PLACE: San Bernardino County Museum, 2024 Orange Tree Lane, Redlands. DIRECTIONS: Exit I-10 at California St. INFO: LADD SEEKINS ladd.g.seekins@gmail.com. (909) 800-3911

CHAPTER

**JAN 6 (WED) 6:30 PM BIG BEAR GROUPEXCOM MEETING**

The meeting place rotates. CONTACT: ED CALIENDO, (442) 242-4103, dogs111@msn.com.

BIG BEAR GROUP

Continued on Page 5 >>>

Calendar . . . Continued from Page 4

**\*\*JAN 7 (THU) 8:00 AM SUNSET PEAK HIKE**  
This will be a moderate 7 mile round trip hike on a fire road up to the top of Sunset Peak (elevation 5796 ft), with 1300 ft. elevation gain. Great panoramic views in all directions from the peak. Rain cancels. BRING: sturdy boots, water, snack, sunscreen, layer clothing appropriate for the weather. Adventure Pass will be required for parking at the trailhead. Contact John St. Clair to confirm and for directions to trailhead and carpooling meeting place. LEADER: John St. Clair at 909-983-8501 or john@stclairs.us  
LOS SERRANOS GROUP

**JAN 7 (THU) 3:00 PM OLIVE MTN HIKE**  
Enjoy the view from Olive Mountain with a moderate to difficult 4-mile round trip hike. Elevation gain of about 1,000 ft. We start promptly at 3:00 p.m. BRING: water, flashlight and sturdy shoes. MEET: from 60fwy in Moreno Valley exit Perris, go north 1 mile, turn right on Kalmia, go ½ mile and turn left on Kitching. Park at the end of the road on Kitching. Rain cancels. INFO and LEADER: Christina Torres (951) 318-7503 or cmt.teck@gmail.com.  
MORENO VALLEY GROUP

**JAN 7 (THU) LOS SERRANOS GROUP EXCOM MEETING**  
Odd-numbered months only (Jan, Mar, May, Jul, Sep, & Nov). PLACE: For meeting time & place, contact BRIAN ELLIOTT, brianelli@aol.com  
LOS SERRANOS GROUP

**JAN 8 (FRI) 9:00 AM WALNUT CREEK HIKE**  
Also known as the MDA or Michael D. Antonovich Trail, is a 3 mile R/T hike with a mere 400' elevation gain. These numbers make for an easy jaunt through canyon woods with multiple stream crossings, so hiking poles are strongly advised. BRING: water, sturdy boots layered clothing and hiking poles. MEET: Please call to confirm by January 7, 5:00 PM. LEADER: JEFF WARHOL (909) 985-7686 or email jmwandjjw@hotmail.com.  
LOS SERRANOS GROUP

**JAN 8 (FRI) 9:00 AM S B MTS GREEN VALLEY LAKE SNOWSHOE OR HIKE**  
We will snowshoe or hike depending on the weather. Green Valley Lake has some of the best snow in our local mountains, so come and join me for a day of fun. No prior snowshoe experience is necessary--it is not difficult to learn--just another form of hiking. You need to provide your own equipment. MEET: in Green Valley Lake across from the post office (33271 Green Valley Lake Rd, Green Valley Lake, CA 92341) at 9 AM. WEAR layered clothing, BRING: No need to bring lunch just a snack and water. LEADER: Sandy Ellis, 909-867-7115, <fsellis67@gmail.com> Please CALL to check on weather conditions. If no snow, we will hike.  
SB MOUNTAINS GROUP

**JAN 9 (SAT) 8:00 AM NORTH VIEW LOOP TRAIL JTNP HIKE**  
Join me on a lesser-known 8-mile hike in Joshua Tree National Park. We'll be on sections of three different day hike trails that provide varied views and terrain from boulders to washes. The trailhead lies about 1.7 miles from the West Entrance Station on the north side of the park road. We'll take the North View Trail for 2.7 miles inside the Wilderness boundary, up and down past some spectacular views, canyon wrens, and giant rock outcrops, pick up the winding Maze Trail for 1.2 miles, take the Window Rock trail for 1.9 miles for a great view of a thunderbird "window", and rejoin the Maze Trail for the remaining 1.2 miles back to the parking area. Don't forget your camera on this one! RATED: Moderate, with some short climbs and descending, but no more than a few hundred feet total elevation gain overall. Some parts of the North View Trail have rough footing. MEET: 7:30 AM at the Joshua Tree Visitor Center parking lot, 6554 Park Boulevard, Joshua Tree CA 92252. Parking at the trailhead is extremely limited (4 cars, or park along the road) so we'll take as few cars as possible. BRING: Enough water for 4-5 hours hiking snacks, hiking poles, wind/sun protection (umbrella, sun hat, sunscreen, protective clothing), personal first aid supplies, and camera. WEATHER: January in the desert can be warm or cold, so please check the forecast prior to the date. RAIN OR SNOW CANCELS. RESERVATIONS: Email LJ Foster at eljayeff@verizon.net (best) or leave a message (name, contact number) at (951) 845-9440.  
BIG BEAR GROUP

**JAN 9 (SAT) 9:00 AM RABBIT RUN HIKE**  
Join us for a short 4 mile hike in the Juniper Flats Area which begins on the East side of Milpas Highlands. We travel up a small rocky canyon, and then return doing a loop into Arrastre Canyon. There are lovely views of the valley from this hike as well as boulders to explore where raptors nest. We will be looking for owl pellets and critter tracks. The trail in the canyon is sandy wash, so be sure to wear good hiking boots. RATED: Moderate MEET: East Milpas Highlands trailhead at the corner of Corto and Santa Rosa Roads. BRING: ten essentials, layered clothing, sun protection, lunch, 2-liters of water. Don't forget your camera and binoculars! For more details/directions please Contact Jenny Wilder JensOasis@aol.com or call 760 220 0730  
MOJAVE GROUP

## JANUARY 11 – JANUARY 17

Please read "LIABILITY WAIVER" preceding these listings  
(Also refer to Weekly reoccurring Outings & Activities)

**JAN 11 (MON) 7:00 PM SB MOUNTAINS GROUP MEETING**  
Monthly program meeting. No meeting in August or December. PLACE: St. Richard's Episcopal Church, 28708 Highway 18, Sky Forest. INFO: DAVE BARRIE, (909) 337-0313.  
SB MOUNTAINS GROUP

**JAN 12 (TUE) 7:00 PM CHAPTER CONSERVATION COMMITTEE MEETING**  
Monthly meeting or conference call. Take part in working on important conservation issues. Please participate: we need your help! INFO: KIM FLOYD, Conservation Chair, kimffloyd@fastmail.fm (760) 249-5385.  
CHAPTER

**JAN 13 (WED) 7:00 PM MOJAVE GROUP MEETING**  
Monthly meeting except for July & August. PLACE: Sterling Inn, Regency Room, 17738 Francesca, Victorville. (One block north of Bear Valley Rd. on Ridgecrest.) Enter on Ridgecrest side of the building. INFO: SUSAN STUEBER, susanquintin.stueber@gmail.com  
MOJAVE GROUP

**JAN 14 (THU) 6:00 PM SANTA MARGARITA GROUP MEETING**  
Monthly meeting except July & August. The public is welcome. PLACE: Temecula Valley Library, 30600 Pauba Road, Temecula. INFO: PAM NELSON (951) 767-2324 sierraclubsmg@gmail.com  
SANTA MARGARITA GROUP

**JAN 16 (SAT) 8:30 AM EAGLE ROCK HIKE**  
Visit the eighth wonder of the world! Eagle Rock is a natural rock formation that appears to be a rock sculpture of the American eagle with it wings fully expanded. This large rock formation can be reached by hiking south of Warner Springs on the Pacific Crest Trail 3.4 miles over a rolling terrain. This is a rare opportunity, don't miss it! This a 6.8 mile round-trip Family Outing (FO) hike. RATED: Moderate in difficulty MEET: Warner Springs southern County Fire Station, CDF Fire Station located at 31049 Highway 79, 92086 on Hwy 79. BRING: ten essentials, layered clothing, and sun protection, 2-liters of water, and lunch. CALL: For reservations, Ed Caliendo, Hiking Leader at (442) 242-4103 or dogs111@msn.com  
BIG BEAR GROUP

## JANUARY 18 – JANUARY 24

Please read "LIABILITY WAIVER" preceding these listings  
(Also refer to Weekly reoccurring Outings & Activities)

**JAN 18 (MON) 9:00 AM ZANJA PEAK HIKE**  
5-Mile Loop or out-and-back, moderate to difficult hike with 1100' elevation gain. Great 360 degree views. BRING: water, a snack, sunscreen, and wear sturdy shoes. MEET: from Interstate 10 exit north/east on Yucaipa Blvd. Proceed 2.9 miles, and then veer left on Oak Glen Rd in 1.0 mile, turn left into the trailhead parking area opposite Shadow Hills Dr. (by the soccer park). Rain Cancels. Please RSVP by 9 p.m. on Jan. 17. INFO and LEADER: Christina Torres (951) 318-7503 or cmt.teck@gmail.com  
MORENO VALLEY GROUP

**JAN 19 (TUE) 7:00 PM LOS SERRANOS GROUP MEETING**  
Monthly except July & August. Programs on nature, conservation & travel topics. The public is welcome & refreshments are served. See Los Serranos webpage for detailed program information: sangorgonio.sierraclub.org/groups/los\_serranos PLACE: First Presbyterian Church, 869 N. Euclid Ave, Upland CA (educational building, entrance in rear). INFO: BRIAN ELLIOTT, brianelli@aol.com  
LOS SERRANOS GROUP

**JAN 20 (WED) 8:30 AM STODDARD PEAK HIKE**  
This is a moderately strenuous hike up Barrett Canyon to the top of Stoddard Peak (elevation 4624 ft.), 6 miles round trip with 1100 ft. elevation gain. The hike follows a service road past charming cabins to the flats, then the last half mile to the peak is a narrow, steep trail & some rock scramble sections. Rain cancels. BRING: sturdy boots, water, snack, sunscreen/hat, & layer clothing appropriate for the weather. Adventure pass is required for parking at trailhead. Contact Kathy Viola to confirm & for directions to trailhead or carpool place in Upland. LEADER: Kathy Viola at 909-346-9653 or kviola826@gmail.com  
LOS SERRANOS GROUP

**JAN 21 (THU) 6:30 PM BIG BEAR GROUP MEETING**  
Monthly meeting except December. INFO: For current program information, please visit the Group web site www.sierraclubbigbeargroup.org. PLACE: Big Bear Discovery Center, 40971 North Shore Dr. (Hwy. 38), Fawnskin. INFO: ED CALIENDO, (442) 242-4103, dogs111@msn.com.  
BIG BEAR GROUP

Continued on Page 8 >>>

## Palm and Pine **Big Bear Group** By Ed Caliendo, Group Chair

### A LOOK AHEAD FOR 2016

#### A Focus on Conservation Leadership and Membership Growth

In 2016 the National Park Service will celebrate its 100<sup>th</sup> anniversary. As you know, the Sierra Club has a long history with our national parks. John Muir was one of the earliest advocates of the national park idea and founder of the Sierra Club in 1892.

It is this 100-year anniversary of our National Park Service that we will focus on conservation of our natural resources of water, forest, trails, and our environment. In addition, we hope to promote new membership growth by gaining support of these environmental issues.

In support of our focus on membership growth, we have expanded our Outings Program in a manner that should stimulate growth of the Sierra Club.

#### Outings Activities Expanded to Focus on Families

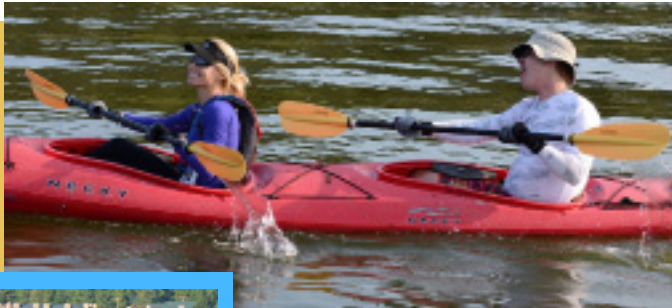
The Big Bear Group will expand its hiking and backpacking activities to include teenagers and adolescents and their parents so they may jointly experience the great outdoors. Selected hike leaders will lead Family Outings (FOs) of varying difficulty as well as over-night backpacking trips. Our goal is to get young families to learn the proper methods of safe hiking, camping, and the importance of wilderness conservation.



All outings will be lead by certified Sierra Club Hike Leaders, all trained in the use of emergency Red Cross First Aid.

#### Outings Expanded to include Canoes, Kayaks, and Paddle Board Outings

This year we are expanding our Outings Program to include canoeing, kayaking, and paddle board water sports. Excursions will be scheduled on Big Bear Lake, surrounding lakes, and other water ways such as Newport Harbor. These activities are



fair weather events, so the summer months will be the busiest. These activities are open to families to participate. Group safety training will be scheduled for beginners and individual advanced training will be available by certified

instructors. The 2016 events will include:

- Discovery Center Water Sports introductions on Thursday, May 19<sup>th</sup>, 6:30 p.m.
- Safety Training – Friday mornings once a month during the summer
- Weekend morning paddle events
- Monthly scheduled outings
- July Paddle Fest Event with 5k, 10k, and 20k events and prizes, and
- Evening Moonlight water activities

Rental equipment will be available through local merchants. Additional information will be forthcoming in the March *Palm and Pine* newsletter.

#### Five Peaks of Big Bear Award Program

For the 8<sup>th</sup> consecutive year, the Big Bear Group promotes health and fitness by issuing a “patch” in recognition of those individuals hiking all five peaks of Big Bear. In order to receive the award, you must accompany a Sierra Club Hiking Leader on a scheduled day-hike to each of the five peaks of Big Bear. At the end of the year, you will be invited to a “Patch Party” to receive your award.

In 2015, ninety-seven (97) individuals attempted to complete all five peaks, but only 21 special individuals succeeded in accomplishing all FIVE peaks! Can you do it in 2016? The five peaks of Big Bear include:

- Gold Mountain (8.0 miles R/T, with 1,640 elevation gain)
- Grey’s Peak (8.0 miles R/T, with 1,400+ elevation gain)
- Bertha Peak (7.5 miles R/T, with 1,400+ elevation gain)
- Delamar Mountain (5.5 miles R/T, with 1,150+ elevation gain)
- Sugarloaf Mountain (10.0 miles R/T, with 2,500+ elevation gain)

A schedule of PEAK hikes will be published in the March issue of the *Palm and Pine*. You will have several opportunities during the months of June – November to complete all five peaks.

In conjunction with the issuance of special recognition patches for individual achievements, we will host our annual “Patch Party” on May 21<sup>st</sup> (Sat) to celebrate the individual achievements, have a barbeque, and hand out patches. This is an annual event the whole family will not want to miss!

A schedule of hikes will be published in the March issue of the *Palm and Pine*. You will have several opportunities during the months of June – October to complete all five peaks.

#### Pacific Crest Trail Special Recognition Awards for Section B, C, and D

In the past few years, we have focused on completing one of the Pacific Crest Trail segments in conjunction with the issuance of special recognition patch for individual accomplishment. In 2016, our primary focus will be the completion of Section C which covers 132.7 miles and is separated into 9 individual day-hikes and one 30-mile backpacking trip. A schedule of segments will be published in the March – April *Palm and Pine*.

In addition, we will schedule makeup segments of Section B and Section D of the Pacific Crest Trail. Those individuals who may have missed prior scheduled segments can selectively complete missing segments.

The good news is that make up segments can be applied to prior completed segments so that over the last three years a hiker can complete all segments of Section B, C, and D and receive a recognition patch at the annual Patch Party in May 2016.

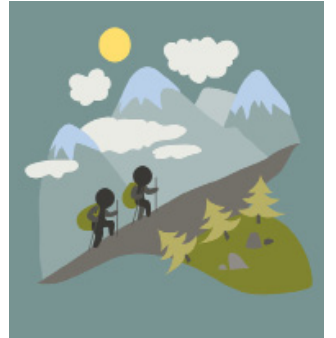
#### Backpack Training and Excursions to the John Muir and Ansel Adams Wilderness

In early June we will conduct our backpack training. This consists of two full days of wilderness training in the great outdoors. Several months in advance, we will assist the trainees in equipment selection based upon individual goals and financial considerations.

Backpacking can be a natural extension of day-hiking with emphasis on survival and greater extension into the wilderness. Those individuals achieving a successful training experience will be eligible for a five-day backpacking trip into the John Muir and Ansel Adams Wilderness in late July 2016.

Further details will be provided in the March-April *Palm and Pine* newsletter or by contacting Ed Caliendo, Big Bear Groups Outings Chair at dogs111@msn.com.

In Summary, there will be something for everyone. In addition to the above special hiking programs, planned backpacking trips, and water sports, Big Bear Group Leaders will weekly explore areas in Big Bear, Lake Arrowhead, San Geronio Wilderness, San Jacinto Wilderness, Mecca Hills, Mohave Desert, Joshua Tree National Park, sections of the Pacific Crest Trail and backpacking trips to the High Sierras! It should be a very exciting year of spectacular trails, special trips, and hiking adventures!



## **Mojave Group** By Susan Stueber, Group Chair

Congratulations go to Bill Spreng and Carol Wiley for being re-elected to the Executive Committee of the Sierra Club Mojave Group. Bill will continue as a Member at Large and Carol will continue as Vice Chair. We are very grateful to have their guidance and experience.

At our November meeting we got a chance to meet Amanda Sansoucie, our SPRONG candidate. She shared with us her experience at the summer training and also how she has applied some of the things that she learned to her job as Environmental Assistant for the EPA Department of the Chemehuevi Tribe. We are working at setting a date when she can come back in January or February to talk to some of the students at Victor Valley College.

The group meetings with the Barstow BLM and various volunteer groups, including the Friends of Juniper Flats, have continued the 2<sup>nd</sup> Tuesday of the month. In October we visited the spots where kiosks will be placed. In November we got a short lesson in monitoring using a paper version of what will eventually be replaced by tablets with software



*Group meeting to discuss placement of kiosks with Miguel Mejia from the Barstow BLM.*

capable of taking a picture and noting the GPS reading. On November 14<sup>th</sup> we held our first event, which was a “Clean-up” of an area near Grapevine Canyon. There were 27 of us, including several people from the BLM. The area was strewn with shotgun shells and casings. There was also a rusted and dilapidated See-do in the gully below the parking area! Our next meeting is going to in-volve learning some fence maintaining skills and practice using the tablets.



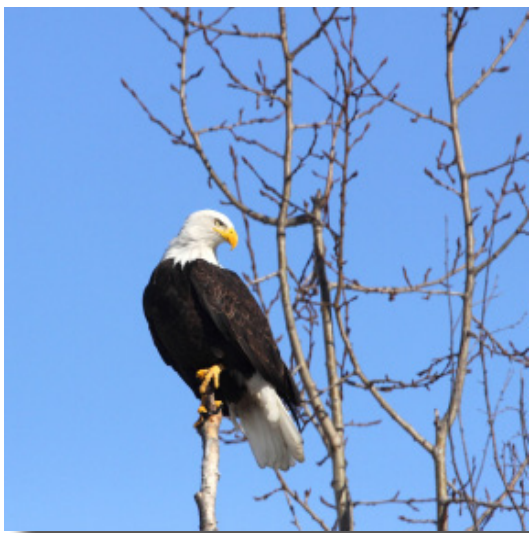
*Mojave Group members following huge cleanup day where they filled the large dumpster behind them to the brim!*

Our February meeting will be our annual Coalition Meeting. The theme this year is centered on the centennial celebration of the National Parks. David Lamfrom and the National Parks Association will be hosting this year’s event.

# Moreno Valley Group

By Ann McKibben, Secretary

The Moreno Valley Group outings leaders have scheduled hikes for January and February. There is an Olive Mountain Hike on Thursday, January 7, 3:00 p.m. and a Terri Peak Hike on Wednesday, January 13 at 9:00 a.m. The complete list of hikes and information can be found on the Chapter's web site (<http://sangorgonio2.sierraclub.org/node/3>), the group web page ([http://sangorgonio2.sierraclub.org/groups/moreno\\_valley](http://sangorgonio2.sierraclub.org/groups/moreno_valley)) and in the *Palm and Pine* listings. Join us for some fun winter hikes here in Moreno Valley!



Bald eagle counts will take place at 8:00 a.m. at the Lake Perris State Recreation Area (LPSRA) on January 9, February 13, and March 12. Anyone can take part in the count. Participants will meet at Perris Regional Indian Museum for orientation which is located within the LPSRA. You do not have to pay the entrance fee if you are taking part in the count. The count lasts about an hour with the wrap up taking place at the museum. You are then free to spend the rest of the day at LPSRA at no cost. Please call (951) 940-5600 to verify all information.

**World Logistics Center (WLC):** The city of Moreno Valley approved the project in August. In response to the lawsuits filed over the approval, the developer collected signatures for three initiatives with the goal to allow the city council to directly approve them. On November 24 the city council adopted the initiatives outright by a 5-0 vote. When the council voted to adopt the WLC's three initiatives, they voided the public's right to vote on them and also undercut many of our legal issues to challenge the project. The South Coast Air Quality Management District (SCAQMD) wrote a very strong letter challenging the legality of two of the developer's initiatives. The Sierra Club and San Bernardino Valley Audubon Society signed onto a letter written by Earthjustice which also challenged the legality of the initiatives.

**Donations Are Still Needed:** Your continued donations help us with this and other efforts to challenge the WLC. Any amount is appreciated. Please send your donations to: Sierra Club—Moreno Valley Group, P.O. Box 1325, Moreno Valley, CA 92556-1325

with the memo notation "WLC." Thank you to all of you who have helped in the past and continue to support our work.

**Villages of Lakeview:** The reworked, revised, recirculated environmental impact report for the almost 9,000 unit VOL housing project on the southern boundary of the San Jacinto Wildlife Area may be released in January 2016. Contact Riverside County Planner Matt Straite at [MSTRAITE@rctlma.org](mailto:MSTRAITE@rctlma.org) or (951) 955-8631 for more information.

**SR-60 Truck Climbing Lanes Project:** The project proposes to construct truck climbing lanes (eastbound), truck descending lanes (westbound) and make shoulder improvements through The Badlands east of Moreno Valley. Comments on the project were due on December 2. We joined with the San Bernardino Valley Audubon Society and the Friends of the Northern San Jacinto Valley to sign onto a letter written by the Center for Biological Diversity (CBD) and Earthjustice. It was an excellent letter which ended by saying there needs to be a full environmental impact report/impact statement done on this project prior to any approval.

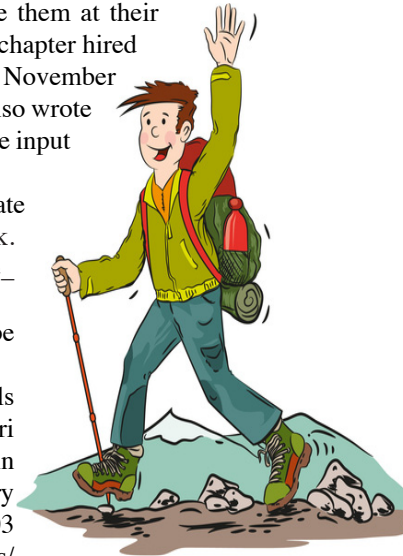
**Riverside County General Plan Update (GPU):** The Riverside County Board of Supervisors held their one public hearing on the GPU and Climate Action Plan (CAP) on November 10 and probably voted to approve them at their scheduled meeting December 8. Our Sierra Club chapter hired an excellent attorney who wrote comments for the November meeting and the Center for Biological Diversity also wrote an excellent letter. We hope they had some positive input on the county's final approvals.

For hours and visitors fees for Lake Perris State Recreation Area please see: <https://www.facebook.com/Lakeperris> & [http://www.parks.ca.gov/?page\\_id=651](http://www.parks.ca.gov/?page_id=651)

Notice that Bernasconi Beach access will be closed due to the repair of the dam.

There is a Moreno Valley Recreational Trails Board hike, Saturday, January 23, 2016, Hike to Terri Peak (Difficult), 7:30 a.m.; meet in the parking lot in front of Landmark Middle School, 15261 Legendary Drive, MV. Verify all information at (951) 413-3703 [http://www.moreno-valley.ca.us/resident\\_services/park\\_rec/trails.shtml](http://www.moreno-valley.ca.us/resident_services/park_rec/trails.shtml) to see their complete list of hikes.

Check our group Facebook page at: <https://www.facebook.com/MorenoValleySierraClub> & our web page [http://sangorgonio2.sierraclub.org/groups/moreno\\_valley](http://sangorgonio2.sierraclub.org/groups/moreno_valley)



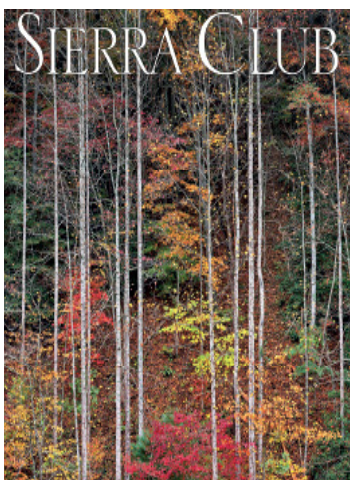
## Los Serranos Group

By Brian Elliott

### SIERRA CLUB 2016 CALENDARS



**Sierra Club 2016 Wilderness Wall Calendar**  
Spiral bound, month-by-month format, featuring 12 majestic North American landscapes.



**Sierra Club 2016 Engagement Calendar**  
Week-by-week format, featuring 57 spectacular photographs and "wire-o" binding.

### Order Form

Save up to 30% off the list price. Support local conservation efforts.

Titles may be combined for quantity pricing.

Title	1-4 price	5-9 price	10+ price	Quantity	Price	Total
Wilderness Wall Calendar	\$13.50	\$12.50	\$11.50	_____	_____	_____
Engagement Calendar	\$14.50	\$13.50	\$12.50	_____	_____	_____

Subtotal \_\_\_\_\_  
Shipping\* \_\_\_\_\_

\*Shipping to one address: \$6.00 for the first calendar and 50 cents for each additional calendar.

Make checks payable to **Sierra Club** and mail this coupon to:

**Sierra Club Calendars, 4079 Mission Inn Ave., Riverside, CA 92501**

(Cost includes all applicable sales taxes computed to the nearest mil)

**Total** \_\_\_\_\_

Name \_\_\_\_\_

Phone \_\_\_\_\_

Address \_\_\_\_\_

City, State, Zip code \_\_\_\_\_

### Ballot



Please indicate your vote on this ballot, cut out and mail so it is received by Jan 31<sup>st</sup>

Mail To:  
Joe Whyte  
1404 Albright Ave.  
Upland, CA 91786

Remember to print your name and address and sign your name on the outside of the envelope so ballot can be verified. If two ballots from a joint membership are enclosed, be sure to print name and address and sign for each ballot.

#### LOS SERRANOS GROUP BALLOT

Please vote for 3 or fewer

- Brian Elliott
- Sue Brown
- Jeff Warhol

#### LOS SERRANOS GROUP BALLOT

Please vote for 3 or fewer

- Brian Elliot
- Sue Brown
- Jeff Warhol



Calendar . . . Continued from Page 5

**JAN 22 (FRI) 9:00 AM S B MTS GREEN VALLEY LAKE  
SNOWSHOE OR HIKE**

We will snowshoe or hike depending on the weather. Green Valley Lake has some of the best snow in our local mountains, so come and join me for a day of fun. No prior snowshoe experience is necessary--it is not difficult to learn—just another form of hiking. You need to provide your own equipment. MEET: in Green Valley Lake across from the post office (33271 Green Valley Lake Rd, Green Valley Lake, CA 92341) at 9 AM. WEAR layered clothing, BRING: No need to bring lunch just a snack and water. LEADER: Sandy Ellis, 909-867-7115, <fsellis67@gmail.com>. Please CALL to check on weather conditions. If no snow, we will hike.

SB MOUNTAINS GROUP

**JAN 23 (SAT) 8:30 AM JTNP BLACK ROCK  
CANYON/WARREN PEAK  
HIKE**

This hike combines generally easy wash walking in pretty Black Rock Canyon with a moderate walk-up ascent of Warren Peak on an occasionally loose use trail. The excellent view from the peak takes in the surrounding valleys, plus San Jacinto and San Gorgonio. Vegetation in the canyon includes Joshua trees, pinyon/juniper, and oak. Total distance for the semi-loop route will depend on how far we go in the canyon, but will be about 7 miles. Starting elevation is 4000 ft., with an 1100 ft. gain to the top of the peak. RATED: Moderate due to steep climb on use trail, plus starting elevation. MEET: Black Rock Ranger Station / Visitor's Center 9800 Black Rock Canyon Road, Yucca Valley, CA 92284. Most likely an entrance fee will not be required. BRING: ten essentials, trekking pole, layered clothing, sun protection, lunch, and 2.5-liters of water RESERVATIONS: Contact Dave Melton, Hike Leader at (760) 408-2456 or dmelton61@yahoo.com

BIG BEAR GROUP

**JAN 23 (SAT) 9:00 AM HIKE TO LOST PALMS OASIS JTNP HIKE**

This moderate to strenuous hike departs from the Cottonwood Spring Trail Head, on the south and east side of Joshua Tree National Park. From Cottonwood Springs Oasis at the trailhead we will head east on a 9.0 mile round trip track to Lost Palms Oasis. We will hike over to Mastodon Peak and Mastodon Mine which are half a mile off of the main trail. Climbing Mastodon Peak is optional and requires boulder and rock scramble up and back down. The main trail for Lost Palms takes us across the desert on coarse sand and through several washes before descending through a canyon to a bluff overlooking the oasis. From the overlook, a steep path descends to the Lost Palms floor. Lost Palms oasis is often rated as Joshua Tree's nicest. Directions: Heading east on I-10 take Cottonwood Springs Road and head north, (If you are going east on I-10 and get to Chiraco Summit you have gone too far east). Drive 7 miles north to the visitor's center, where we will meet. This park DOES have a DAY FEE (\$20 per car or America the Beautiful Pass) which can be paid at the visitor center. "Rain Cancels" as there are many washes and slot canyons to traverse. You will need to bring plenty of water, wear comfortable hiking shoes, dress in layers and don't forget the sunscreen. Reservations & info: Leader Gary Marsalone at (858)663-1201 or hikesie@gmail.com.

SANTA MARGARITA GROUP

**\*\*JAN 24 (SUN) 9:00 AM COUGAR CREST TRAIL HIKE**

This is a moderate to strenuous 4 mile hike leading up to the legendary Pacific Crest Trail. You will see drier forest habitat on this hike. Bring your camera for excellent views of Big Bear Lake and the PCT. MEET: Hikers are to meet at Cougar Crest Trailhead located half-mile west of the Big Bear Discovery Center. An Adventure Pass is required for parking: BRING: 2.0 Liters of water, snack/lunch, sunscreen, sunglasses, hat, trekking poles good hiking shoes. RESERVATIONS: Contact Hike Leader, Charlotte Watts at 909-866-7423 or momswebsite@gmail.com

BIG BEAR GROUP

**JANUARY 25 – JANUARY 31**

Please read "LIABILITY WAIVER" preceding these listings  
(Also refer to Weekly reoccurring Outings & Activities)

**JAN 26 (TUE) 7:00 PM SAN GORGONIO CHAPTER EXCOM  
MEETING**

Chapter governance meeting. Monthly except for December. PLACE: The San Gorgonio Chapter office, 4079 Mission Inn Ave., Riverside. INFO: MARY ANN RUIZ, ruizmaryann@gmail.com, (909) 815-9379

CHAPTER

**JAN 28 (THU) 9:00 AM FISH CANYON FALLS HIKE**

This is a moderate 5.2 mile round trip hike with 1400 ft. elevation gain, above Azusa/Duarte area. The first .7 mile is a protected path through the Vulcan Quarry and then crosses a bridge to a beautiful trail through the canyon for 1.9 miles to the waterfalls. If we get some rain, we will be rewarded with an 80 foot 3 tiered waterfall before returning. This is a very interesting hike with quarry operations, gorgeous canyons, history, & spectacular waterfalls! Rain cancels. BRING: sturdy boots, water, snack, sunscreen/hat, layer clothing appropriate for the weather. Gravel parking lot is at the end of Encanto Pkwy. Contact Kathy Viola to confirm & for directions to trailhead or carpool place in Upland. LEADER: Kathy Viola at 909-346-9653 or kviola826@gmail.com.

LOS SERRANOS GROUP

**JAN 30 (SAT) 8:00 AM LOWER DEEP CREEK HIKE**

An easy 3 mile hike through this beautiful area with abundant wildlife. Bring sturdy boots and be prepared to get your feet wet depending on the flow of the river. MEET: Victor Valley Museum, Apple Valley Road, Apple Valley. BRING: Water, snacks and a reminder about sturdy shoes. INFO: Norman Bossom. 760-912-3725. coachnorm@yahoo.com

MOJAVE GROUP

**JAN 30 (SAT) 8:30 AM MURRAY CANYON TRAIL HIKE**

This 4.5-mile out and back Family Outing (FO) rated hike features mini-waterfalls, hidden pools, and tree-lined streams. We begin in a sandy desert before delving into a lush canyon (the traverse is on land once inhabited by ancestors of the Agua Caliente Cahuilla Indians). The path hugs a palm tree-lined stream with waterfalls and cold, refreshing pools as long as there has been recent rain. Keep a lookout for bighorn sheep, occasionally spotted in the area. RATED: Easy to moderate in difficulty. A gradual uphill grade leads to three-tiered Seven Sisters, a series of stone pools connected by small cascades. Expect possible stream crossings. MEET: At the west end of Von's Shopping Center parking lot near Hwy 111, 4733 E. Palm Canyon Drive, Palm Springs on Hwy 111. This hike requires entry to the Agua Caliente Indian Reservation and has a cost involved of \$9/adult, \$7/senior, \$5/children, free for military with ID. BRING: ten essentials, layered clothing, sun protection, lunch, and 2-liters of water. RESERVATIONS: Contact Darlene Taylor, Hike Leader at 951-385-5706 or dtaylorncrew@verizon.net.

BIG BEAR GROUP

**JAN 30 (SAT) 8:30 UTAH CANYONS OVERLOOK HIKE**

This is an approximate 4.0 mile round-trip hike in the curious and mysterious Mecca Hills. We will hike to the top of a ridge overlooking Salton Sea basin an view colorful reddish canyons. The reddish canyon empties out onto Box Canyon Road and eventually returns us to our vehicles. The legendary Philip Ferranti, explorer and author of "140 Great Hikes in and near Palm Springs" will lead this hike. RATED: This adventure hike is rated EASY in difficulty, with a 400' elevation gain. RAIN OR BAD WEATHER CANCELS HIKE. MEET: Take Hwy I-10 to Spot Light 29 Casino, Dillon Road off-ramp and look for the TA Travel Center gas station signage. Meet in the parking lot under the TA Travel sign. BRING: ten essentials, layered clothing, hiking boots, trekking poles, sun-protection, and lunch, 2-liters of water, gloves and trekking poles. RESERVATIONS: Contact Ed Caliendo, Hike Leader at dogs111@msn.com or call (442) 242-4203.

BIG BEAR GROUP

**FEBRUARY 1 – FEBRUARY 7**

Please read "LIABILITY WAIVER" preceding these listings  
(Also refer to Weekly reoccurring Outings & Activities)

**FEB 1 (MON) 9:00 AM BONITA VISTA FIRST DAY HIKE**

The Bonita Vista First Day Hikes offer individuals and families an opportunity to rejuvenate and connect with the outdoors by taking a hike on the first day of each month. We will explore the unique natural and cultural treasures in this beautiful area. RATING: Moderate with an uphill at the beginning and downhill at the end. This hike will be approximately 4 miles long. BRING: Water, a snack/lunch, and wear sturdy shoes/boots. MEET: Victor Valley Museum, Apple Valley Rd., Apple Valley at 8:30 AM. LEADER: Susan Stueber 760-900-5330, susanquintin.stueber@gmail.com or CO-LEADER: Jenny Wilder jensoasis@aol.com

MOJAVE GROUP

**FEB 1 (MON) 6:00 PM SB MOUNTAINS GROUP EXCOM MEETING**

Alpine Conference Room 27236 Blue Jay Mall on Feb 1, Apr 4, May 2, Oct 3, Nov 7. INFO: DAVE BARRIE, (909) 337-0313. SB MOUNTAINS GROUP

**FEB 2 (TUE) 7:30 PM SAN GORGONIO CHAPTER MEETING**

PROGRAM: See front-page notice. PLACE: San Bernardino County Museum, 2024 Orange Tree Lane, Redlands. DIRECTIONS: Exit I-10 at California St. INFO: LADD SEEKINS ladd.g.seekins@gmail.com. (909) 800-3911

CHAPTER

**FEB 3 (WED) 6:30 PM BIG BEAR GROUP EXCOM MEETING**

The meeting place rotates. CONTACT: ED CALIENDO, (442) 242-4103, dogs111@msn.com.

BIG BEAR GROUP

**FEB 4 (THU) 4:30 PM OLIVE MTN HIKE**

Enjoy the view from Olive Mountain with a moderate to difficult 4-mile round trip hike. Elevation gain of about 1,000 ft. We start promptly at 4:30 p.m. BRING: water, flashlight and sturdy shoes. MEET: from 60fwy in Moreno Valley exit Perris, go north 1 mile, turn right on Kalmia, go ½ mile and turn left on Kitching St. Park at the end of the road on Kitching. Rain cancels. INFO and LEADER: Christina Torres (951) 318-7503 or cmt.teck@gmail.com.

MORENO VALLEY GROUP

Continued on Page 9 >>>



## Legacies of Letty French Live On

By Ann Olander

### FEB 5 (FRI) 9:00 AM SB MTS GREEN VALLEY LAKE SNOWSHOE OR HIKE

We will snowshoe or hike depending on the weather. Green Valley Lake has some of the best snow in our local mountains, so come and join me for a day of fun. No prior snowshoe experience is necessary—it is not difficult to learn—just another form of hiking. You need to provide your own equipment. MEET: in Green Valley Lake across from the post office (33271 Green Valley Lake Rd, Green Valley Lake, CA 92341) at 9 AM. WEAR layered clothing, BRING: No need to bring lunch just a snack and water. LEADER: Sandy Ellis, 909-867-7115, <fsellis67@gmail.com> Please CALL to check on weather conditions. If no snow, we will hike.

SB MOUNTAINS GROUP

### FEB 6 (SAT) WATERCAVE HIKE

This is a popular hike in Arrastre Canyon, just south of Apple Valley. It is about 4-6 miles round trip with great views of the Victor Valley. Huge boulders dot the hills in the Juniper Flats Area. You look at them from the Victor Valley, now come and explore this beautiful area with us! RATED: moderate MEET: Call for meeting time. Victor Valley Museum, 11873 Apple Valley Road, Apple Valley, CA 92308. We will then caravan to the trailhead which is about 15 miles with 6 miles on dirt road. High clearance vehicle recommended for the dirt roads. BRING: ten essentials, layered clothing, sun protection, lunch, 2-liters of water and Hiking poles are a good addition. Don't forget you camera and binoculars! For more details/directions please Contact Jenny Wilder JensOasis@aol.com or call 760 220 0730

MOJAVE GROUP

### FEB 6 (SAT) 8:30 AM PCT WARNER SPRINGS-INDIAN FLATS HIKE

This 9.2 mile segment takes us from Warner Springs northward to Indian Flats Road 9S05 Section B, Segment 1). This is one of the favorite Pacific Crest Trail Section B hikes due to the portion along Agua Caliente Creek. We have scheduled the hike early in the year so the creek should be flowing, as it was last year. Starting elevation is 3000 ft. with 1100 ft. gain. RATED: Moderate-strenuous due to length. MEET: At the southern end of Warner Springs across from the CDF Fire Station located at 31049 Highway 79, 92086. The shuttle is all on paved roads. BRING: ten essentials, layered clothing, sun protection, lunch, and 2.5-liters of water RESERVATIONS: Contact Dave Melton, Hike Leader at (760) 408-2456 or dmelton61@yahoo.com

BIG BEAR GROUP

### FEB 6 (SAT) 8:30 AM PIPES CANYON/INDIAN LOOP HIKE

The Pipes Canyon-Indian Loop can be found within the Pioneertown Mountains Preserve managed by The Wildlands Conservancy. The woodlands in the canyon are nourished by a flowing stream from the surrounding mountain snowmelt runoff. Pinion pine, Joshua trees, goldenbush, Mojave yucca, and a generous offering of other plant species are to be seen along with big horn sheep, mule deer, rabbits, coyote, and other animals. This is a 7.0 mile loop-hike taking 4 hours to complete.

Continued on Page 10 >>>

Louise "Letty" French, a legendary Sierra Club leader whose passionate environmental spirit inspired many of us locally and nationally, died on July 4, 2015. Yet her boundless warmth and innovative organization skills live on within our chapter and the national Sierra Club.

For almost 20 years Letty, her husband Cal or both of them led the week-long training trip for Sierra Club's national outing leaders. But Letty told me in 1997 that her work as Chapter Outings Chair (and Chapter LTC Chair) in the late 1980s to 1990 was her most satisfying SC work, "getting the outings program, its Wilderness Skills and Leadership Training Courses back flourishing and viable."

As an RN, Letty had begun teaching Wilderness First Aid as early as 1970. Several years later, she and Cal organized, wrote and taught our chapter's Leadership Training Course, which is still operative today.

Many people remember Letty's local hikes, trail-maintenance parties and service outings.. Moreover, hundreds of people took advantage of Letty's leadership on national SC trips – more than 38, counting through 1996.

Trips with Letty meant getting to know her fun-loving, caring ways. But she also knew the names of plants and natural history. In fact, she initiated our chapter's Natural Science Section. A skilled rock climber, Letty served as chair of the chapter's former Rock Climbing Section..

Letty served as Chapter Chair in 1985,

1986, and wore many other hats, such as chair of the Chapter Political Committee. For seven years in the 1980s, Letty headed SCCOPE (Sierra Club Committee on Political Education.) Yet while serving under many SC titles, Letty (and Cal) worked tirelessly for other conservation efforts such as the CA Parks and Wilderness Initiative.

In 1978 the couple helped incorporate the Los Sorrans Group, where Letty served many years as group chair and conservation chair. She worked in endless ways to preserve local wilderness or stop development, such as across wildlife corridors. "You can't get involved in outings," Letty said, "without realizing the need for conservation."

When Letty recognized SC needs, she usually found a way; hence in 1984, she organized the first SC national outing backpacking trip for women only. The trip became so popular that three sections filled. In subsequent years, other women assumed leadership.

In 1982, the Marjorie and Clark Jones Service Award went to Letty, and in 1987, Letty and Cal together received the Sierra Club Oliver Kehrlin Award for Outstanding Work in National Outings. But awards don't tell the whole story. Whatever the occasion, people gravitated to Letty with her easy laughter and open friendliness.

For more data after Letty and Cal moved to Adelaida in 1998, see her obituary notice, *San Luis Obispo Tribune*, August 9. <http://www.legacy.com/obituaries/sanluisobispo/obituary.aspx?n=louise-maurer-french-letty&pid=175466195>



### Open Space . . . from Page 1

only name disclosed as the source of all \$1.5 million of campaign spending for Measure L.

"Dark money" contributions from LLCs figure prominently in current corruption trials of top New York State legislators. To stop this abuse of campaign financing, the *New York Times* (11-19 & 12-1-15) is calling for new campaign finance reforms, including "an end to unlimited campaign contributions through limited liability companies...."

Fortunately, the Sierra Club and other opponents of Measure L were able to overcome the Nevada LLC's dark money. Measure L lost by 57 percent.

But now the developer is back for a second initiative attempt in 2016 to break down Prop. R and Measure C. No doubt big money and hiding contributors behind the LLC will again be major tools in his strategy. It's high time for local residents to get transparency in campaigns to protect our environment and urge State officials to plug the LLC contribution loophole.



### Political Update . . . from Page 1

involved in working on some of these campaigns.

We have an exciting campaign season ahead and hopefully, we can get more involvement from our members in competitive races. Don't forget, we also need to hold onto Congressional seats that will have strong challenges. Takano, Torres, Aguilar and Ruiz can expect early

endorsements, based on their records and we can't afford to lose those hard won seats.

In 2016, we could truly see the Inland Empire and the San Gorgonio Chapter turn green. Expect some emails and phone calls asking you to get involved. With your help, we can make a difference for the environment.





### Advertise With Us

Place your ad in our bi-monthly

**Palm & Pine Newsletter**  
and you'll be  
**"Flying Your Own Flag"**  
while reaching over **5,000 households!**

**It's EASY and EFFECTIVE!**

**Display Advertising Rates (Black and White)** Palm and Pine pages are 9 1/2 inches wide by 14 1/2 inches deep. There are four columns per page; each column is 2 1/4 inches wide. Display Advertising is charged at a rate of \$12.50 per column inch. **Special business card-size ad rate: \$40.00/issue.** Call or e-mail for Multiple Advertising Rate Schedule.

**Classified Advertising Rates**  
Personal: \$0.25 per word. \$5.00 minimum.  
Commercial: \$0.50 per word. \$10.00 minimum.  
Classified advertising is accepted to a maximum of 8 lines (about 45 characters to the line).

**Circulation and Distribution**  
Rates are based on an average circulation of 5,500 per issue. The Chapter member subscription is included in membership dues. Subscriptions rates for non-members is \$9.00 for six issues. Single copies are \$1.50. The newsletter is published and distributed on or before the 1st of the month, six times each year beginning January 1<sup>st</sup>.

**Deadlines**  
Deadline: 1st of the month preceding the issue date.  
(Feb 1, Apr 1, Jun 1, Aug 1, Oct 1, Dec 1)

**Submission and Payments**  
E-mail directly to [mywwuni@charter.net](mailto:mywwuni@charter.net)  
Payments must be received at least two weeks before deadline. Mail all payments to Treasurer Ladd Seekins, 4079 Mission Inn Ave., Riverside, Ca 92501; be sure and mark envelope "advertising."

**Any Questions? Call or email us TODAY at (951) 686-4141 or [ralphsalisbury@att.net](mailto:ralphsalisbury@att.net) . . . Ask for Ralph!**

All advertising must comply with National Sierra Club advertising policies.



*Calendar . . . Continued from Page 9*

**RATING:** Moderate, with an elevation gain of 900'. **MEET:** Take I-10 to Hwy 62 turn north towards Joshua Tree National Park. After 19 miles, in the town of Yucca Valley, turn left at Pioneertown Road. After 5-6 miles at the Pipes Canyon Road intersection (marked by a Pioneertown Mountains Preserve sign), drive west for 0.6 miles veer right at the next sign for Pioneertown Mountains Preserve, continue driving 0.4 miles to the entrance gate and parking area. **BRING:** Ten-essentials, layered clothing, adequate water, lunch/snack, sunscreen, sunglasses, hat and gloves. **RESERVATIONS:** Call Hike Leader, Ed Caliendo (442) 242-4103 or dogs111@msn.com. **BIG BEAR GROUP**

**FEB 7-9 (SUN-TUE) 8:30 AM JOSHUA TREE SAMPLER GROUP CAR CAMP**  
Save these dates and come out to Joshua Tree National Park, spend Sunday and Monday nights camping at Sheep Pass Group Campsite. We will hike, explore, relax and have a share our favorite campground cooking in a potluck on Sunday night. Campsite is reserved, \$10 per night per participant for site, any extra will go to Los Serranos group. \$20 park entrance fee or National Parks pass required. Contact leader for more info and to sign up. **LEADER:** Mary Ann Ruiz 909-815-9379 or ruizmaryann@gmail.com  
**LOS SERRANOS GROUP**

## FEBRUARY 8 – FEBRUARY 14

Please read “**LIABILITY WAIVER**” preceding these listings  
(Also refer to **Weekly reoccurring Outings & Activities**)

**FEB 8 (MON) 7:00 PM SB MOUNTAINS GROUP MEETING**  
Monthly program meeting. No meeting in August or December. **PLACE:** St. Richard’s Episcopal Church, 28708 Highway 18, Sky Forest. **INFO:** DAVE BARRIE, (909) 337-0313.  
**SB MOUNTAINS GROUP**

**FEB 9 (TUE) 7:00 PM CHAPTER CONSERVATION COMMITTEE MEETING**  
Monthly meeting or conference call. Take part in working on important conservation issues. Please participate: we need your help! **INFO:** KIM FLOYD, Conservation Chair, kimffloyd@fastmail.fm (760) 249-5385.  
**CHAPTER**

**FEB 10 (WED) 8:00 AM PALMS TO PINES HIKE**  
This is a moderate/strenuous hike out of Palm Springs on the famous trail to the tram. We will, however, be doing a lower part of the trail of 10 miles up and back with about 2000 foot gain. On another occasion you can do the upper part of the trail from the tram. If interested call or email the leader. Joe Whyte 909-949-0899 or whytejoe@msn.com  
**LOS SERRANOS GROUP**

**FEB 10 (WED) 7:00 PM MOJAVE GROUP MEETING**  
Monthly meeting except for July & August. **PLACE:** Sterling Inn, Regency Room, 17738 Francesca, Victorville. (One block north of Bear Valley Rd. on Ridgecrest.) Enter on Ridgecrest side of the building. **INFO:** SUSAN STUEBER, susanquintin.stueber@gmail.com  
**MOJAVE GROUP**

**FEB 11 (THU) 8:00 AM MT. WILSON HIKE**  
This is a very strenuous all day hike to the top of Mt. Wilson at 5650 ft elevation. We will start in Sierra Madre to hike up 8 miles of a tough 4700 ft. gain to the peak and then return the same way making it a 16 mile round trip. NOT for beginners! Even strong hikers will find this challenging! Rain cancels. **BRING:** sturdy boots, plenty of water, snacks & lunch, sunscreen/hat, layer clothing appropriate for the weather. Contact Kathy Viola to confirm & for directions to trailhead or carpool place in Upland. **LEADER:** Kathy Viola at 909-346-9653 or kviola826@gmail.com  
**LOS SERRANOS GROUP**

**FEB 11 (THU) 4:30 PM BOX SPRINGS PARK HIKE**  
Moderate 4 mile round trip hike to the towers via the Spring trail. Approx. 400 ft elevation gain. We start promptly at 4:30 p.m. **BRING:** water, flashlight and sturdy shoes. **MEET:** from 60fwy in Moreno Valley go north on Pigeon Pass about 4 miles where road veers left and turns into Box Springs Mountain Road (mostly dirt road). In 1.2 miles you reach the parking area on the right. Parking fee \$5. Rain cancels. **INFO and LEADER:** Christina Torres (951) 318-7503 or cmt.teck@gmail.com  
**MORENO VALLEY GROUP**

**FEB 11 (THU) 6:00 PM SANTA MARGARITA GROUP MEETING**  
Monthly meeting except July & August. The public is welcome. **PLACE:** Temecula Valley Library, 30600 Pauba Road, Temecula. **INFO:** PAM NELSON (951) 767-2324 sierraclubsmg@gmail.com  
**SANTA MARGARITA GROUP**

**FEB 13 (SAT) 7:30 AM LOST PALMS OASIS TRAIL SOUTHERN JTNP HIKE**  
This is a repeat hike in case you missed it in December. The largest grove of California fan palms in all of Joshua Tree National Park lies at the end of this very nice, but dry, 4-mile trail each way, making 8 miles total crossing rocks and washes, and along ridges. Once arriving at the trail’s end, a steep descent takes you down to the shade under the palms at the bottom of a ravine. The area is designated for day use only, to protect the resident desert bighorn sheep. Elevation changes frequently with a couple of short but steep climbs. Total elevation gain/loss is approximately 600-700 feet; the trail has mostly good tread with a few steep, rocky stretches, and the views are excellent, allowing a few glimpses of the Salton Sea. The trail is located near a popular campground and sign-ups will be limited to a maximum of ten hikers in order to avoid crowding. We’ll have lunch at the palm oasis. **RATED:** Moderately strenuous, due to the nature of this very exposed shadeless trail, and the length (8 miles). **MEET:** Take I-10 to Spotlight 29 Casino, Dillon Road off-ramp, and look for the TA Travel Center gas station sign. Meet in the parking lot under the TA Travel sign. We will carpool to the Cottonwood entrance of the Park since the parking area is not very large. There’s an entrance fee (\$20) unless you have a Park pass. The road is paved the whole way. **BRING:** Plenty of water for 4-5 hours’ hiking in the sun, sun protection (umbrella, sun hat, sunscreen, protective clothing), lunch, snacks,

possibly a warm layer, personal first aid supplies, trekking poles, and camera. **WEATHER:** February in the low desert can be warm or cold, so please check the forecast prior to the date. **RAIN OR SNOW CANCELS.** **RESERVATIONS:** Email LJ Foster at eljayeff@verizon.net (best) or leave a message (name, contact number) at (951) 845-9440. Since the number of hikers will be limited, be sure to cancel if you cannot make it so someone else can take your place.  
**BIG BEAR GROUP**

**FEB 13 (SAT) 8:00 AM SB MTS LALKE GREGORY WINTER BIRD WALK**  
**MEET:** North Shore parking lot, Across from Goodwin’s (24089 Lake Gregory Drive, Crestline 92325). Pay \$8.00 parking fee or park on street free. See wintering birds as we walk around the lake (2.5 miles). Optional breakfast after. **LEADER:** Bill Eng, 909-338-1910, billengs@yahoo.com  
**SB MOUNTAINS GROUP**

**FEB 13 (SAT) 9:00 AM MAIDENHAIR FALLS HIKE**  
Join me on a 5.5-6 mile moderately difficult hike with 900’ of elevation gain/loss. From the desert landscape at the trailhead we will travel past Sycamores, cottonwoods then Palms to Maidenhair Falls a true oasis in the desert. At the falls there is a shallow pool surrounded by layers of Maidenhair fern along with mosses, well worth the effort to get there. Hikers will have to climb over or around some large boulders and thorned cacti abound. Hikers should bring 3 liters of water, lunch and snacks. Please wear comfortable hiking shoes with soles that don’t slip. Dress in layers, wear a hat, long pants are a good idea and do not forget the sunscreen. **Directions:** From Temecula take 79 south (Temecula Pkwy) to Warner Springs. Turn left onto San Filipe Rd/S2. Travel about 4 or 5 miles then turn left on S22 (Montezuma Valley Rd.) heading to Borrego Springs. Continue on S22 for about 17 miles. The trail head is on the left .7 miles from the stop sign at Palm Canyon Rd. If you missed the trail head turn around at the stop sign. The trail head is on the right .7 miles up the hill. To register or if you have questions contact Bob Audibert bob.takeahike1@gmail.com or (951)302-1059, rain cancels. No passes or permits are required.  
**SANTA MARGARITA GROUP**

## FEBRUARY 15 – FEBRUARY 21

Please read “**LIABILITY WAIVER**” preceding these listings  
(Also refer to **Weekly reoccurring Outings & Activities**)

**FEB 16 (TUE) 7:00 PM LOS SERRANOS GROUP MEETING**  
Monthly except July & August. Programs on nature, conservation & travel topics. The public is welcome & refreshments are served. See Los Serranos webpage for detailed program information: sangorgonio.sierraclub.org/groups/los\_serranos **PLACE:** First Presbyterian Church, 869 N. Euclid Ave, Upland CA (educational building, entrance in rear). **INFO:** BRIAN ELLIOTT, brianelli@aol.com.  
**LOS SERRANOS GROUP**

**FEB 18 (THU) 4:30 PM HIDDEN SPRINGS HIKE**  
Moderate 4-mile loop hike on the Hidden Springs trail where wild burros are usually seen. Trail has some ups and downs but basically follows the base of the hills. We start promptly at 4:30 p.m. Bring flashlight, water and sturdy shoes. **MEET:** Hidden Springs School, 9801 Hidden Springs Dr., Moreno Valley. Rain cancels. **INFO and LEADER:** Christina (951) 318-7503 or cmt.teck@gmail.com  
**MORENO VALLEY GROUP**

**FEB 18 (THU) 6:30 PM BIG BEAR GROUP MEETING**  
Monthly meeting except December. **INFO:** For current program information, please visit the Group web site www.sierraclubbigbeargroup.org. **PLACE:** Big Bear Discovery Center, 40971 North Shore Dr. (Hwy. 38), Fawnskin. **INFO:** ED CALIENDO, (442) 242-4103, dogs111@msn.com  
**BIG BEAR GROUP**

**FEB 19 (FRI) 9:00 AM SB MTS GREEN VALLEY LAKE SNOWSHOE OR HIKE**  
We will snowshoe or hike depending on the weather. Green Valley Lake has some of the best snow in our local mountains, so come and join me for a day of fun. No prior snowshoe experience is necessary—it is not difficult to learn—just another form of hiking. You need to provide your own equipment. **MEET:** in Green Valley Lake across from the post office (33271 Green Valley Lake Rd, Green Valley Lake, CA 92341) at 9 AM. **WEAR** layered clothing, **BRING:** No need to bring lunch just a snack and water. **LEADER:** Sandy Ellis, 909-867-7115, <fsellis67@gmail.com> Please CALL to check on weather conditions. If no snow, we will hike.  
**SB MOUNTAINS GROUP**

**FEB 20 (SAT) 8:00 AM HIGHWAY 173 HIKE**  
This is a moderate 5 mile round trip, with a steady initial climb, along a Highway closed to traffic. The views across the Mojave River Basin and Deep Creek are wonderful. **BRING:** Water, Snacks, a camera and wear sturdy shoes. **MEET:** Victor Valley Museum, Apple Valley Road, Apple Valley. **INFO:** Norman Bossom. 760-912-3725. coach norm@yahoo.com  
**MOJAVE GROUP**

**FEB 20 (SAT) 8:30 AM JOSHUA TREE BOY SCOUT TRAIL HIKE**  
This is a one-way shuttle or key-exchange hike from Indian Cove to Park Blvd, in the northwest area of the park. The higher southern portion of the hike runs along the Wonderland of Rocks with pinyon/juniper and oak trees. Total distance is 8 miles. Elevation range is 2800 ft. to 4200 ft with a 1400 ft. gain or loss. **RATED:** Moderate **MEET:** Joshua Tree Visitor’s Center, 6554 Park Boulevard, Joshua Tree, CA 92252. Entrance fee is \$20 (\$30 for a Joshua Tree Annual Pass). All driving is on paved roads. **BRING:** ten essentials, layered clothing, sun protection, lunch, and 2.5-liters of water **RESERVATIONS:** Contact Dave Melton, Hike Leader at (760) 408-2456 or dmelton61@yahoo.com  
**BIG BEAR GROUP**

**FEB 20 (SAT) 7:30 AM PCTSEC D: SOLEDAD CANYON RD-AGUADULCE HIKE**  
This make-up hike is 9.7 miles and completes Section D of the Pacific Crest Trail. This hike gets high marks because the last 1.5 miles pass through the spectacular Vasquez Rocks County Park. After leaving Soledad Canyon road, we quickly ford the Santa Clara

*Continued on Page 11 >>*

*Calendar . . . Continued from Page 10*

River (2,205') and cross Southern Pacific railroad tracks (2243') before reaching a trio of power lines and Young Canyon road (2960'). The PCT turns NW for 4.9 miles to a tunnel under Antelope Valley Highway 14 (2370') in Escondido Canyon (2510'). Only one more mile to reach Agua Dulce post office and general store, where Section D ends. Those individuals completing all 13 segments of Section D will be eligible to receive a recognition patch signifying the accomplishment and completion of 110.2 miles. RATED: Moderate, RAIN OR BAD WEATHER CANCELS. MEET: U.S. Post Office in Russ, CA located off of Hwy 14 and Soledad Canyon Road, in the parking lot at 7:30 AM. BRING: ten essentials, layered clothing, hiking boots, trekking poles, sun protection, energy snacks, lunch, and 2-liters of water RESERVATIONS: Contact Hike Leader, Sharon Nardoza at snardoza@cox.net or (760) 208-3654, or Hike Leader, L.J. Foster at (951) 845-9440 or eljaye@verizon.net to register. **BIG BEAR GROUP**

### FEBRUARY 22 – FEBRUARY 28

Please read "LIABILITY WAIVER" preceding these listings  
(Also refer to Weekly reoccurring Outings & Activities)

**FEB 23 (TUE) 7:00 PMSAN GORGONIO CHAPTER EXCOM MEETING**  
Chapter governance meeting. Monthly except for December. PLACE: The San Gorgonio Chapter office, 4079 Mission Inn Ave., Riverside. INFO: MARY ANN RUIZ, ruizmaryann@gmail.com, (909) 815-9379 **CHAPTER**

**FEB 24 (WED) 4:30 PM OLIVE MTN HIKE**  
Enjoy the view from Olive Mountain with a moderate to difficult 4-mile round trip hike. Elevation gain of about 1,000 ft. We start promptly at 4:30 p.m. BRING: water, flashlight and sturdy shoes. MEET: from 60fwy in Moreno Valley exit Perris, go north 1 mile, turn right on Kalmia, go ½ mile and turn left on Kitching. Park at the end of the road on Kitching. Rain cancels. INFO and LEADER: Christina Torres (951) 318-7503 or cmt.teck@gmail.com **MORENO VALLEY GROUP**

**FEB 26 (FRI) 9:00 AM THE CLAREMONT TRIANGLE HIKE**  
That's what I call East on the Thompson Creek Trail, North on the Pomello Trail and South on the Sycamore Canyon Trail, to return to the Thompson Creek Trail. Help celebrate my 3rd year as a Sierra Club Hike Leader by joining me on this moderate. 5 miler with a 800' elevation gain. BRING: water, sturdy boots, layered clothing and hiking poles. MEET: Please call to confirm by February 25, 5:00 PM, LEADER: JEFF WARHOL (909) 985-7686 or e-mail jmwandjw@hotmail.com. **LOS SERRANOS GROUP**

**FEB 27 (SAT) 8:00 AM ARRASTRE FALLS HIKE**  
A 4 mile round trip through the lovely Arrastre Canyon. There is an uphill section of half a mile so I class this hike as moderate. BRING: Water, snacks, a camera and sturdy shoes. MEET: Victor Valley Museum, Apple Valley Road, Apple Valley. INFO: Norman Bossom. 760-912-3725. coach norm@yahoo.com. **MOJAVE GROUP**

**FEB 27 (SAT) 8:30 AM MURRAY HILL (PEAK) HIKE**  
This is an approximate 9.2 mile round-trip loop hike and a perennial favorite! Prominent from many directions, the pyramid-shaped Murray Hill offers panoramic views across the southern Santa Rosa Mountains. It is difficult to call Murray Hill anything but a "peak" yet officially it is a hill on all the maps and well worth the trek. After climbing to an elevation of 2,100' you will think it more like a PEAK! The views are magnificent, showing the region around Palm Springs, Cathedral City, and Palm Canyon while offering you the nearby San Jacinto Mountains to the west and if we are lucky, the desert will be in bloom! RATED: Strenuous in difficulty, RAIN OR BAD WEATHER CANCELS HIKE. MEET: Behind the Vons Shopping Center, 4733 E. Palm Canyon Drive, Palm Springs on Hwy 111. BRING: ten essentials, layered clothing, hiking boots, trekking poles, sun protection, energy snacks, lunch, and 2-liters of water RESERVATIONS: Contact Mike Nardoza, Hike Leader at Mikenardoza@cox.net or (760) 685-5321, or you can also contact Ed Caliando, Hike Leader at dogs111@msn.com at (760) 328-1090. **BIG BEAR GROUP**

**FEB 28 (SUN) 8:30 AM BIG BEAR PCT HIKE**  
This hike begins at Onyx Summit Trail Head, 8,400' Elevation, heading south, where we will come upon a movie set animals' compound. Just might be lucky enough and see a number of animals including lions, tigers and bears not currently "performing on stage". RATING: moderate with an 800' elevation gain. It is a seven mile out and back hike. BRING: 2 liters of water, snack/lunch, hat, sunscreen, sunglasses, trekking poles, good hiking boots. MEET: Vons parking lot, 42170 Big Bear Blvd. Big Bear Lake where we will carpool to the trail head. Those coming up 38 through Redlands may meet us at the trail head at 9 AM RESERVATIONS: Contact Charlotte Watts at 909-866-7423 or momsampsite@gmail.com **BIG BEAR GROUP**

### MARCH 1 – MARCH 7

Please read "LIABILITY WAIVER" preceding these listings  
(Also refer to Weekly reoccurring Outings & Activities)

**MAR 1 (TUE) 7:30 PM SAN GORGONIO CHAPTER MEETING**  
PROGRAM: See front-page notice. PLACE: San Bernardino County Museum, 2024 Orange Tree Lane, Redlands. DIRECTIONS: Exit I-10 at California St. INFO: LADD SEEKINS ladd.g.seekins@gmail.com. (909) 800-3911 **CHAPTER**

**MAR 2-6 (WED-SUN) ANZA BORREGO STATE PARK SPRING CAR CAMP/HIKES**  
Visit this amazing California desert state park east of San Diego when temperatures are cooler and wild flowers may be blooming. Our space in a developed group campground is reserved from 2pm Wed. to noon on Sunday. Arrive anytime on Wednesday and explore the park on your own. An optional half-day off-road adventure with a commercial outfitter

(\$135) on Thur. or Fri. Day hikes may require walking over rocky trails and some areas of rock scrambling off trail. Deposit required by February 1st to confirm participation. Limited to 18 people. For more information contact leader: Rich Juricich, rich.sierraclub@pacbell.net, 916-492-2181 **CNRCC DESERT COMMITTEE**

**MAR 2 (WED) 6:30 PM BIG BEAR GROUP EXCOM MEETING**  
The meeting place rotates. CONTACT: ED CALIENDO, (442) 242-4103, dogs111@msn.com **BIG BEAR GROUP**

**MAR 3 (THU) LOS SERRANOS GROUP EXCOM MEETING**  
Odd-numbered months only (Jan, Mar, May, Jul, Sep, & Nov). PLACE: For meeting time & place, contact BRIAN ELLIOTT, brianelli@aol.com **LOS SERRANOS GROUP**

**MAR 5-6 (SAT-SUN) EXPLORE AFTON CANYON CARCAMP/HIKE**  
Afton Canyon Natural Area is 37 miles N/E of Barstow off the I-15. This is an area where the Mojave River runs above ground and the Mojave Road goes through the canyon. Afton Canyon is known for the outstanding scenery and riparian habitat. We will camp at the campground and hike into the canyon on both days to see the interesting sites. Hikes are rated moderate. For those who wish to get there early, camping will be available on Friday night also. Leader: Carol Wiley desertlily1@verizon.net or 760-245-8734. **MOJAVE GROUP**

### COMING UP

Please read "LIABILITY WAIVER" preceding these listings  
(Also refer to Weekly reoccurring Outings & Activities)

**MAR 10-12 (THU-SAT) DEATH VALLEY WILDERNESS RESTORATION SERVICE**  
Come help restore wilderness values in this remote and beautiful desert park. It may be a spectacular wildflower year, and we will have time to stop and admire the flowers. Project has not yet been determined, but may be working on the Cottonwood Canyon trail. Possibility that it will change before March. Leader: Kate Allen, kj.allen96@gmail.com, 661-944-4056. **CNRCC DESERT COMMITTEE**

**MAR 18-21 (FRI-MON) HIKE AND TOUR IN MOJAVE PRESERVE HIKES**  
Meet at Sunrise Campground on Friday at noon and then visit the historic "rock house" and hike the loop. Camping at Sunrise is primitive. Saturday will be a longer hike from Mid Hills down the canyon towards Hole-in the Wall and hopefully we'll see wildflowers. Camp at Mid Hills Campground. Sunday we can hike to Teutonia Peak and view Cima Dome and camp again at Sunrise Rock for those who would like to stay over another night. Monday we can tour through the Preserve to Amboy Crater, where we can finish the tour with a hike up the crater. All hikes will be moderate to easy. Leader: Carol Wiley desertlily1@verizon.net or (760) 245-8734. **MOJAVE GROUP**

**MAR 25-27 (FRI-SUN) CALIFORNIA DESERT WILDERNESS SERVICE**  
Join Mojave Group and the CA/NV Wilderness Committee for our annual desert wilderness service project with wilderness staff Needles office of BLM. This year's destination is still top-secret at press time, but Turtle Mountains, Dead Mountains or Clipper Mts are all potential choices for some fun and useful restoration work, wilderness enhancement, and spring desert enjoyment. Central commissary, contact Vicky Hoover 415-977-5527 or vicky.hoover@sierraclub.org **CNRCC WILDERNESS COMMITTEE**

**MAR 26 (SAT) 9:15 AM STODDARD PEAK HIKE**  
Come along and enjoy a nice hike and climb to the top of Stoddard Peak, located off San Antonio Cyn near Mt. Baldy. Moderate pace, 6 miles round trip, 1,100' gain. The hike in Barrett Canyon is easy and goes past some charming cabins. The last half mile up Stoddard Peak is a steep scramble. MEET 9:15 am in the City of Claremont at US Bank, 393 W. Foothill Blvd., 91711 (NE corner of Foothill and Indian Hill Blvd). Park in the back lot, away from the entrance to the bank. BRING 2 litres of water, lunch, snacks, appropriate footwear, and layered clothing. Rain cancels. LEADER: BILL JOYCE (909) 596-6280 bill@rollingtherock.com. **LOS SERRANOS GROUP**

### NON-SIERRA CLUB ACTIVITIES

The following activities, meeting & events are neither sponsored nor administered by the Sierra Club. The Sierra Club has no information about the planning of these activities & makes no representations or warranties about the quality, safety, supervision or management of such activities. They are published only as a reader service because they may be of interest to the readers of this publication.

### NON-SIERRA CLUB RECURRING WEEKLY & MONTHLY MEETINGS (LOOK IN CALENDAR FOR DATES)

**(1ST FRI) 8:30 PM INTERNATIONAL FOLK DANCE FOLK DANCE  
NON-SIERRA CLUB EVENT UC RIVERSIDE FOLK DANCE CLUB**  
Note: there will be no meeting July 4. Join us for international folk dancing. This is the same group that used to meet at UCR. Meetings are twice monthly: on the 1st & 3rd Fridays. COST: \$3 donation to help pay for the room. PLACE: Highgrove United Methodist Church, 938 W. Center St., Highgrove. DIRECTIONS: Take the Center St. exit from Interstate 215. The church is one half mile east of the freeway on the right. INFO: GAIL SEEKINS (909) 825-4427 lgseekins@sbcglobal.net or LARRY POWELL (909) 864-2309

*Continued on Page 12 >>>*

**• Sustainable Interior Design – Sustainability Consulting •**  
**• Real Estate Sales Specializing in Green Homes •**

Kirk Galt, MBA, LEED AP Homes  
 Realtor, Sustainability Consultant

(909) 452-6333  
 BRE# 01812267

Jodi Galt, LEED Green Assoc.  
 Sustainable Interior Designer

(909) 279-8183

GaltGreenDesign.com

greenlivingsocal.org

Calendar . . . Continued from Page 11

**(3RD WED) 7:30 PM**  
**NON-SIERRA CLUB EVENT**

**AUDUBON SOCIETY MEETING**  
**SAN BERNARDINO VALLEY**  
**AUDUBON SOCIETY**

PROGRAM: A guest speaker presents an illustrated program on wildlife or natural science. Come early to browse the gift tables & socialize. LOCATION: San Bernardino County Museum, 2024 Orange Tree Lane, Redlands. DIRECTIONS: Exit 110 at California St. INFO: DORI MEYERS, (714) 779-2201.

**(3RD FRI) 8:30 PM** **INTERNATIONAL FOLK DANCE FOLK DANCE**  
**NON-SIERRA CLUB EVENT**  
**UC RIVERSIDE FOLK DANCE CLUB**

Join us for international folk dancing. This is the same group that used to meet at UCR. Meetings are twice monthly: on the 1st & 3rd Fridays. COST: \$3 donation to help pay for the room. PLACE: Highgrove United Methodist Church, 938 W. Center St., Highgrove. DIRECTIONS: Take the Center St. exit from Interstate 215. The church is one half mile east of the freeway on the right. INFO: GAIL SEEKINS (909) 825-4427 lgseekins@sbcglobal.net or LARRY POWELL (909) 864-2309

**NON-SIERRA CLUB ACTIVITIES CALENDAR**

**JAN 1 (FRI) 8:30 PM**  
**NON-SIERRA CLUB EVENT**  
**UC RIVERSIDE FOLK DANCE CLUB**

**INTERNATIONAL FOLK DANCE**

At press time it is not known whether this folk dance will take place or be cancelled because of the holiday. Please call to confirm. Join us for international folk dancing. This is the same group that used to meet at UCR. Meetings are twice monthly: on the 1st & 3rd Fridays. COST: \$3 donation to help pay for the room. PLACE: Highgrove United Methodist Church, 938 W. Center St., Highgrove. DIRECTIONS: Take the Center St. exit from Interstate 215. The church is one half mile east of the freeway on the right. INFO: GAIL SEEKINS (909) 825-4427 lgseekins@sbcglobal.net or LARRY POWELL (909) 864-2309

**JAN 15 (FRI) 8:30 PM** **INTERNATIONAL FOLK DANCE**  
**NON-SIERRA CLUB EVENT**  
**UC RIVERSIDE FOLK DANCE CLUB**

Join us for international folk dancing. This is the same group that used to meet at UCR. Meetings are twice monthly: on the 1st & 3rd Fridays. COST: \$3 donation to help pay for the room. PLACE: Highgrove United Methodist Church, 938 W. Center St., Highgrove. DIRECTIONS: Take the Center St. exit from Interstate 215. The church is one half mile east of the freeway on the right. INFO: GAIL SEEKINS (909) 825-4427 lgseekins@sbcglobal.net or LARRY POWELL (909) 864-2309

**JAN 20 (WED) 7:30 PM** **AUDUBON SOCIETY MEETING**  
**NON-SIERRA CLUB EVENT**  
**SAN BERNARDINO VALLEY AUDUBON SOCIETY**

PROGRAM: A guest speaker presents an illustrated program on wildlife or natural science. Come early to browse the gift tables & socialize. LOCATION: San Bernardino County Museum, 2024 Orange Tree Lane, Redlands. DIRECTIONS: Exit 110 at California St. INFO: DORI MEYERS, (714) 779-2201.

**FEB 5 (FRI) 8:30 PM** **INTERNATIONAL FOLK DANCE**  
**NON-SIERRA CLUB EVENT**  
**UC RIVERSIDE FOLK DANCE CLUB**

Join us for international folk dancing. This is the same group that used to meet at UCR. Meetings are twice monthly: on the 1st & 3rd Fridays. COST: \$3 donation to help pay for the room. PLACE: Highgrove United Methodist Church, 938 W. Center St., Highgrove. DIRECTIONS: Take the Center St. exit from Interstate 215. The church is one half mile east of the freeway on the right. INFO: GAIL SEEKINS (909) 825-4427 lgseekins@sbcglobal.net or LARRY POWELL (909) 864-2309

**FEB 10 (WED) 6:00-8:00 PM** **ANNUAL HIGH DESERT COALITION MEETING**  
**NON-SIERRA CLUB EVENT** **NATIONAL PARKS CONSERVATION ASSOCIATION**

This year's theme will be the National Parks Centennial Celebration. The host will be David Lam from the National Parks Conservation Association and the Mojave National Park Conservancy. This event provides an opportunity for the public to learn more about the various conservation organizations in the Victor Valley area. It also helps those organizations to work together for the benefit of all residents of the High Desert. Where: Victor Valley Museum, 11873 Apple Valley Road, Apple Valley. We hope that you will join us for this evening. For more information contact Carol Wiley at desertlily1@verizon.net or (760) 245-8734 or Susan Stueber at susanquintin.stueber@gmail.com or (760) 900-5330.



**Membership**

YES, I want to help safeguard our nation's precious natural heritage.  
 My check is enclosed.

Name \_\_\_\_\_

Address \_\_\_\_\_

City \_\_\_\_\_

State \_\_\_\_\_ ZIP \_\_\_\_\_

E-mail \_\_\_\_\_

Check enclosed, made payable to Sierra Club

MasterCard Visa Exp Date \_\_\_\_\_ / \_\_\_\_\_

Cardholder Name \_\_\_\_\_

Card # \_\_\_\_\_

Contributions, gifts and dues to the Sierra Club are not tax deductible; they support our effective, citizen-based advocacy and lobbying efforts. Your dues include \$7.50 for a subscription to *Sierra* magazine and \$1.00 for your Chapter newsletter.

**MEMBERSHIP CATEGORIES**

	INDIVIDUAL	JOINT
Introductory .....	\$15	
Regular .....	\$39	\$47
Supporting .....	\$75	\$100
Contributing .....	\$150	\$175
Life .....	\$1,000	\$1,250
Senior .....	\$24	\$32
Student .....	\$24	\$32

F94 **W-1200**

**Sierra Club**  
 P. O. Box 421041  
 Palm Coast, FL 32142-1041

**Exciting February 2<sup>nd</sup> Chapter Meeting: "100 Days on the Mighty Colorado River"**

**A** 2,400-Mile Solo Kayak Odyssey - Join adventure traveler Bryan Brown to relive his remarkable story about successfully completing the first-ever solo, unsupported descent of the entire 2,400-mile Colorado River watershed September-November 2013, as a tribute to his brother. The meeting starts at 7:30 pm, Tuesday February 2, 2016, at the San Bernardino County Museum, 2024 Orange Tree Lane, Redlands.

are embattled in one way or another. Mr. Brown's presentation ultimately focuses specifically upon strategic water-use issues.

By vocation, Bryan Brown is a Wall Street Market Strategist. By avocation, he is an eco/adventure traveler. His river portfolio now includes some 7,000 miles of unsupported wilderness travel under some of the most challenging conditions possible.

In other endeavors, Bryan has hiked the 2,100-mile Appalachian Trail, completed a 3,000-mile solo transcontinental bicycle ride, climbed over forty (40) 14,000-foot mountains, collected rare Oceanic art by dugout canoe on the Sepik River in Papua New Guinea, snorkeled with Minke and Humpback whales in Tonga, fed Komodo dragons on their home turf, shared an interesting open-ocean dive with two full-grown whale sharks and a Galapagos Shark,



Consisting of the Green River and the Upper and Lower Colorado Rivers, the historic Green/Colorado watershed features some of the most fabled and remote whitewater passages on earth: Dinosaur National Monument, Desolation Canyon, Cataract Canyon, Grand Canyon, and Westwater Canyon. This is the journey renowned explorer John Wesley Powell originally intended to take.

This journey was the first of three source-to-mouth kayak expeditions - the Colorado, the Yukon, and Canada's MacKenzie Rivers - successfully executed to highlight how the management of the Colorado River watershed serves as a benchmark for the other large watersheds in North America. All of these regions

and rounded Cape Horn by sea.

He and wife Sandy have traveled on six of the seven continents, share a passion for scuba diving, and have logged dives in Indonesia, Malaysia, the Solomon Islands, Fiji, New Guinea, the Maldives, the Galapagos, Tonga, Cocos Island, and throughout Central America and the Caribbean.